



REPUBLIC OF THE PHILIPPINES  
**NATIONAL DISASTER RISK REDUCTION AND MANAGEMENT COUNCIL**

National Disaster Risk Reduction and Management Center, Camp Aguinaldo, Quezon City, Philippines

**NDRRMC UPDATE**

**SitRep No. 10 re Effects of Typhoon "Ruby" (HAGUPIT)**

Releasing Officer:

  
**USEC ALEXANDER P. PAMA**  
 Executive Director

**DATE : 08 December 2014, 6:00 PM**

Sources: DOST-PAGASA, DOST-PHIVOLCS, DSWD, DOH, DILG, DPWH, DA, DEPED, DTI, DENR, PIA, AFP, PNP, BFP, PCG, PRC, NTC, CAAP, NGCP, MMDA, RDRRMCs/OCDs I, II, IV-A, IV-B, V, VI, VII, VIII, IX, X, XI, XII, CARAGA, and CAR

**I. SITUATION OVERVIEW**

**Typhoon "RUBY" has weakened into a Tropical Storm as it moves toward the province of Marinduque**

<b>Location of Center: (as of 4:00 PM)</b>	<b>15 km southeast of Laiya, Batangas</b>
<b>Coordinates:</b>	<b>13.6°N, 121.5°E</b>
<b>Strength:</b>	Maximum sustained winds of 85 kph near the center and gustiness of up to 100 kph
<b>Movement:</b>	Forecast to move West Northwest at <b>13 kph</b>
<b>Forecast Positions/Outlook:</b>	<i>Tuesday afternoon:</i> <b>240 km west of Quezon City</b> <i>Wednesday afternoon:</i> <b>590 km west of Quezon City</b> <i>Thursday afternoon:</i> <b>920 km west of Quezon City</b>

**PUBLIC STORM WARNING SIGNAL**

<b>PSWS</b>	<b>Luzon</b>
<b>#2 (Winds of 61-100 kph is expected in at least 24 hours)</b>	<b>Metro Manila, Batangas, Cavite, Bataan, Laguna, Southern Quezon, Marinduque, Northern Oriental Mindoro, Northern Oriental Mindoro, including Lubang Island</b>  Residents in low-lying and mountainous areas are alerted against possible flashfloods and landslides. Likewise, those living along the coast are warned on the occurrence of big waves associated with Storm Surge which may reach up to 2 meters.
<b>#1 (Winds of 30-60 kph is expected in at least 36 hours)</b>	<b>Zambales, Pampanga, Tarlac, Bulacan, Rizal, Rest of Quezon, Rest of Mindoro Provinces, Romblon</b>  These areas will have occasional rains with occasional gusty winds.

- Expected fourth landfall: **Laiya, Batangas 6 pm today** and it will be associated with **strong winds, storm surge, and moderate to heavy rainfall**
- Estimated rainfall amount is from **5 – 15 mm per hour (moderate – heavy)** within the **450 km diameter** of the typhoon
- **TS "RUBY"** and the Northeast Monsoon will cause rough to very rough sea conditions over the seaboard of Luzon and Visayas. Fisherfolks and those using small seacraft are advised not to venture out over the said seaboard
- Expected to Exit PAR: **Wednesday evening**
- Public Storm Warning Signal elsewhere has been lifted

## II. AFFECTED POPULATION (Tab A)

- A total of **259,675 families / 1,186,961 persons** were affected
- A total of **226,605 families / 1,034,464 persons** are currently being served inside and outside evacuation centers
- A total of **1,731 families/7,998 persons** were pre-emptively evacuated to 19 evacuation centers in Manila, Marikina, Navotas, Parañaque, Muntinlupa and Malabon in NCR

CITY/MUNICIPALITY	NO. OF FAMILIES	NO. OF INDIVIDUALS	NAME OF EVACUATION CENTER
MANILA	807	3,732	Baseco Evacuation Center; Benigno Aquino Elementary School; Corazon Aquino Elementary School and Baseco covered court
MARIKINA	292	1,354	H. Bautista Elementary School and Nangka Elementary School
NAVOTAS	74	370	Tanza Elementary School
PARANAQUE	333	1,152	La Huerta Elementary School; San Dionisio Gym and Brgy. Sto. Niño Evacuation Center
MUNTINLUPA CITY	445	1870	Alabang Elementary School; Sucat Elementary School; Kupang Elementary School; ALS; Poblacion Elementary School and Brgy. Poblacion Covered Court
MALABON CITY	43	147	Potrero Elementary School; Integrated School and Dampalit Elementary School
<b>TOTAL</b>	<b>1,731</b>	<b>7,998</b>	

## III. CASUALTIES

- Two (2) deaths were reported in the Province of Iloilo:

NAME	AGE / GENDER	ADDRESS	REMARKS
1. Thea Rojo	1 yr. old / Female	Brgy. Balasan, Balasan, Iloilo	Due to Hypothermia on 06 December 2014
2. Ernesto Baylon	65 yrs. old / Male	Brgy. Bayas, Estancia, Iloilo	Due to Hypothermia on 06 December 2014

## IV. SUSPENSION OF WORK AND CLASSES (Tab B)

- In view of the effects of TY "RUBY", classes are suspended in some areas of Regions III, IV-A, IV-B, V, VI, VII, and NCR on 08 December 2014
- Work in government offices in Regions IV-A, IV-B, and NCR are suspended on 08 December 2014

## V. STATUS OF LIFELINES

### Seaports (Tab C)

- A total of **1,953** passengers, **74** vessels, **429** rolling cargoes, and **4** motorbancas, are still stranded due to bad weather

### Airports and Flights

- A total of **184 domestic and 24 international flights** have been cancelled due to bad weather (**Tab D**)
- **As of 08 December 2014**, airport in **Borongan, Eastern Samar is closed**
- Notice to Airmen (NOTAM) has been issued effective today for the opening of Tacloban airport from 6AM-6PM for military and general aviation flights for relief operations only until 14 December 6PM
- **As of 08 December 2014**, the following airports are open for operations, however, landing and take-off are subject to prevailing aerodrome weather conditions:
  - Legaspi
  - Masbate City
  - Marinduque
  - San Jose
  - Virac
  - Busuanga
  - Plaridel
  - Puerto Princesa

- **As of 08 December 2014**, the following airports are already operational

AIRPORT	CURRENT STATUS	REMARKS
Antique	Airport open	
Bacolod	Airport open	
Busuanga	Airport open	
Calbayog	Airport open	
Catarman	Airport open	
Caticlan	Airport open	
Dumaguete	Airport open	
Iloilo	Airport open	
Kalibo	Airport open	
Legazpi	Airport open	
Mactan	Airport open	
Marinduque	Airport open	
Masbate	Airport open	Philippine Airlines flight has been cancelled
Naga	Airport open	
Plaridel	Airport open	
Puerto Princesa	Airport open	
Roxas	Airport open	
San Jose	Airport open	
Tacloban	Airport open	Commercial flights limited to smaller aircraft (DH8D, AT72 and below) only; NOTAM has been issued
Tagbilaran	Airport open	
Virac	Airport open	

### Power (Tab E)

- **Seventeen (17) provinces in five (5) regions** are experiencing power outages due to TY Ruby
- **Power are now restored in the affected areas in Romblon and in the Municipalities of San Fernando, Gainza, Camaligan, Pasacao, Pamplona and Ragay all in Camarines Sur**

### Telecommunications

- Globe and Smart networks are currently down in some parts of Leyte and Eastern Samar

## VI. ROADS AND BRIDGES (Tab F)

### National Roads

- A total of **nine (9) road sections are closed to traffic** due to flooding, landslides and fallen trees in Regions V and VIII
- A total of **four (4) road sections are not passable to light vehicles in Leyte and San Fernando, Romblon** due to flooding
- A total of **eight (8) road sections are hardly passable to traffic**, (5 in Region V and 3 in Region VIII) due to flooding, landslides, uprooted trees and toppled electric posts
- All other national roads of affected regions are open to traffic
- **Buenavista Bridge in Brgy Lilukin, Buenavista, Quezon Province is not passable due to the high level of water**

### Local Roads (7)

- One (1) road in Quezon (Region IV-A) and six (6) roads in Samar (Region VIII) are reported not passable

## VII. FLOODED AREAS

- **Four (4) flooded areas were reported in Quezon Province, Region IV-A**

PROVINCE	AREA	WATER LEVEL
REGION IV-A		
Quezon	Pagbilao	17 inch
	Pitogo	34 inch
	Brgy. Almacen, Unisan	17 inch
	Panaon, Unisan	17 inch

## VIII. COST OF ASSISTANCE (Tab G)

- A total of **PhP60,718,256.50** worth of assistance have been provided to Regions V, VI, VII and XIII
  - DSWD - **PhP53,724,866.40**
  - LGUs - **PhP 6,993,390.10**

## IX. DECLARATION OF STATE OF CALAMITY

PROVINCE	RESOLUTION NO.	DATE
Albay	Resolution No. 109-2014	06 December 2014
Camarines Sur	Resolution No. 644-2014	06 December 2014
<b>Catanduanes</b>	<b>SP No. 337 s., 2014</b>	<b>06 December 2014</b>

## X. DISASTER RESPONSE (Tab H)

- **Response Cluster Situation Report No. 8 as of 8 December, 2014, 4:00 PM**

## XI. DISASTER PREPAREDNESS FOR NCR (Tab I)

---

**Effects of Typhoon "RUBY" (HAGUPIT)**  
**AFFECTED POPULATION**  
 As of 08 December 2014, 6:00 PM

Region/Province/ Mun/City	AFFECTED			No. of Evac Centers	Inside Evacuation Centers		Outside Evacuation Centers		TOTAL SERVED - CURRENT (Inside + Outside)	
	Brgys	Families	Persons		Families	Persons	Families	Persons	Families	Persons
<b>GRAND TOTAL</b>	<b>818</b>	<b>259,675</b>	<b>1,186,961</b>	<b>687</b>	<b>225,763</b>	<b>1,030,560</b>	<b>842</b>	<b>3,904</b>	<b>226,605</b>	<b>1,034,464</b>
<b>NCR</b>	<b>3</b>	<b>111</b>	<b>431</b>	<b>3</b>	<b>111</b>	<b>431</b>	-	-	<b>111</b>	<b>431</b>
MANILA CITY	1	16	87	1	16	87			16	87
NAVOTAS CITY	1	74	273	1	74	273			74	273
PARANAQUE	1	21	71	1	21	71			21	71
<b>REGION IV-A (CALABARZON)</b>	<b>213</b>	<b>14,182</b>	<b>63,561</b>	<b>296</b>	<b>13,366</b>	<b>60,058</b>	-	-	<b>13,366</b>	<b>60,058</b>
<b>BATANGAS</b>	<b>15</b>	<b>595</b>	<b>2,877</b>	<b>15</b>	<b>595</b>	<b>2,877</b>	-	-	<b>595</b>	<b>2,877</b>
BATANGAS CITY	5	240	1,200	5	240	1,200			240	1,200
CALAGA	1	25	88	1	25	88			25	88
CUENCA	1	17	81	1	17	81			17	81
LIPA CITY	3	251	1,279	3	251	1,279			251	1,279
PADRE GARCIA	2	16	59	2	16	59			16	59
SAN JUAN	1	17	54	1	17	54			17	54
SAN NICOLAS	1	25	103	1	25	103			25	103
SAN PASCUAL	1	4	13	1	4	13			4	13
CAVITE	1	3	16	1	3	16			3	16
CAVITE CITY	1	3	16	1	3	16			3	16
<b>LAGUNA</b>	<b>12</b>	<b>236</b>	<b>870</b>	<b>14</b>	<b>236</b>	<b>870</b>	-	-	<b>236</b>	<b>870</b>
LILIW	1	1	4	1	1	4			1	4
LOS BAÑOS	9	205	733	11	205	733			205	733
PANGIL	1	24	108	1	24	108			24	108
VICTORIA	1	6	25	1	6	25			6	25
<b>QUEZON</b>	<b>185</b>	<b>13,348</b>	<b>59,798</b>	<b>266</b>	<b>12,532</b>	<b>56,295</b>	-	-	<b>12,532</b>	<b>56,295</b>
AGDANGAN	9	4,902	22,061	13	4,740	21,135			4,740	21,135
ALABAT	14	341	1,433	15	341	1,433			341	1,433
ATIMONAN	7	265	1,276	11	265	1,276			265	1,276
BUENAVISTA	7	323	1,508	10	242	1,045			242	1,045
CALAUAG	13	622	2,542	15	595	2,973			595	2,973
CATANAUAN	12	647	3,235	18	647	3,235			647	3,235
GENERAL LUNA	3	49	246	4	49	246			49	246
GUINAYANGAN	4	261	1,275	3	261	1,275			261	1,275
GUMACA	5	106	580	5	106	580			106	580
JOMALIG	3	63	267	7	63	267			63	267
LOPEZ		88	375		88	375			88	375
MACALELON	8	533	2,012	10	533	2,012			533	2,012
MAUBAN	4	180	900	6	180	900			180	900
MULANAY	20	650	3,241	23	650	3,241			650	3,241
PADRE BURGOS	13	413	2,065	20	413	2,065			413	2,065
PAGBILAO	3	88	373	4	88	373			88	373
PEREZ	5	85	306	8	85	306			85	306
PITOGO	18	505	2,034	27	505	2,034			505	2,034
QUEZON		311	1,064		311	1,064			311	1,064
SAN ANDRES	7	1,047	4,803	13	1,047	4,803			1,047	4,803
SAN FRANCISCO	4	55	287	2	55	287			55	287
SAN NARCISO	7	840	4,443	11	392	2,203			392	2,203
TAGKAWAYAN	4	418	1,443	12	418	1,443			418	1,443
UNISAN	15	556	2,029	29	458	1,724			458	1,724
<b>REGION IV-B (MIMAROPA)</b>	<b>359</b>	<b>26,860</b>	<b>115,182</b>	<b>388</b>	<b>26,760</b>	<b>114,528</b>	-	-	<b>26,760</b>	<b>114,528</b>
<b>MARINDUQUE</b>	<b>80</b>	<b>3,997</b>	<b>15,755</b>	<b>57</b>	<b>3,997</b>	<b>15,755</b>	-	-	<b>3,997</b>	<b>15,755</b>
BOAC	34	1,308	5,513	30	1,308	5,513			1,308	5,513
GASAN		1,538	5,066		1,538	5,066			1,538	5,066
MOGPOG	18	438	1,610	1	438	1,610			438	1,610
SANTA CRUZ	5	89	446	2	89	446			89	446
TORRIJOS	23	624	3,120	24	624	3,120			624	3,120
<b>OCCIDENTAL MINDORO</b>	<b>63</b>	<b>5,126</b>	<b>22,301</b>	<b>81</b>	<b>5,020</b>	<b>21,647</b>	-	-	<b>5,020</b>	<b>21,647</b>
ABRA DE ILOG	2	284	1,129	6	284	1,129			284	1,129
CALINTAAN	1	151	661	5	151	661			151	661
LOOC	5	171	855	5	171	855			171	855
LUBANG		16	80		16	80			16	80
MAGSAYSAY	10	589	2,862	10	483	2,208			483	2,208
MAMBURAO	2	1,202	4,628	10	1,202	4,628			1,202	4,628
PALUAN	3	90	450		90	450			90	450
RIZAL	8	165	634	8	165	634			165	634
SABLAYAN	12	802	3,524	12	802	3,524			802	3,524
SAN JOSE	20	1,531	6,978	23	1,531	6,978			1,531	6,978
SANTA CRUZ		125	500		125	500			125	500
<b>ORIENTAL MINDORO</b>	<b>61</b>	<b>6,052</b>	<b>28,057</b>	<b>51</b>	<b>6,055</b>	<b>28,057</b>	-	-	<b>6,055</b>	<b>28,057</b>
BACO	3	273	1,328	2	273	1,328			273	1,328
BANSUD	7	903	4,335	18	903	4,335			903	4,335
BULALACAO (SAN PEDRO)	15	1,920	9,600	1	1,920	9,600			1,920	9,600
CALAPAN	6	283	1,166	2	286	1,166			286	1,166
GLORIA	2	63	314	2	63	314			63	314
MANSALAY	7	598	2,761	3	598	2,761			598	2,761
PINAMALAYAN	9	869	4,599	7	869	4,599			869	4,599
POLA	10	978	3,176	12	978	3,176			978	3,176
PUERTO GALERA	1	63	268	1	63	268			63	268
SAN TEODORO	1	23	115	3	23	115			23	115
VICTORIA		79	395		79	395			79	395
<b>PALAWAN</b>	<b>52</b>	<b>4,899</b>	<b>21,548</b>	<b>83</b>	<b>4,899</b>	<b>21,548</b>	-	-	<b>4,899</b>	<b>21,548</b>
AGUTAYA	3	48	142		48	142			48	142
ARACELI	4	600	3,216	14	600	3,216			600	3,216
BROOKE'S POINT		8	40		8	40			8	40
BUSUANGA	7	165	825	9	165	825			165	825
CORON		127	654		127	654			127	654
CULION	5	151	538	10	151	538			151	538
CUYO		481	2,123		481	2,123			481	2,123
EL NIDO (BACUIT)	4	60	304	4	60	304			60	304
LINAPACAN	5	1,244	5,625	8	1,244	5,625			1,244	5,625
MAGSAYSAY	6	295	1,330	7	295	1,330			295	1,330
ROXAS	12	1,247	4,386	20	1,247	4,386			1,247	4,386
TAYTAY	6	473	2,365	6	473	2,365			473	2,365
<b>ROMBLON</b>	<b>103</b>	<b>6,786</b>	<b>27,521</b>	<b>116</b>	<b>6,789</b>	<b>27,521</b>	-	-	<b>6,789</b>	<b>27,521</b>
ALCANTARA	9	117	585	2	117	585			117	585
BANTON	9	75	298		75	298			75	298
CAJIDIOCAN	5	252	1,017		252	1,017			252	1,017
CALATRAVA	7	541	2,420	17	541	2,420			541	2,420

Region/Province/ Mun/City	AFFECTED			No. of Evac Centers	Inside Evacuation Centers		Outside Evacuation Centers		TOTAL SERVED - CURRENT (Inside + Outside)	
	Brgys	Families	Persons		Families	Persons	Families	Persons	Families	Persons
CONCEPCION	9	327	1,090	11	327	1,090			327	1,090
CORCUERA	5	789	3,163	9	789	3,163			789	3,163
FERROL	6	570	2,345	15	573	2,345			573	2,345
LOOC		941	3,598		941	3,598			941	3,598
MAGDIWANG		150	689		150	689			150	689
ODIONGAN	19	1,309	4,914	34	1,309	4,914			1,309	4,914
ROMBLON	9	312	1,269	13	312	1,269			312	1,269
SAN AGUSTIN	12	607	2,579	9	607	2,579			607	2,579
SAN ANDRES	7	290	1,268		290	1,268			290	1,268
SAN FERNANDO		368	1,793		368	1,793			368	1,793
SANTA FE	2	10	60		10	60			10	60
SANTA MARIA (IMELDA)	4	128	433	6	128	433			128	433
<b>REGION V (BICOL REGION)</b>	<b>-</b>	<b>37,410</b>	<b>181,666</b>	<b>0</b>	<b>36,778</b>	<b>181,131</b>	<b>-</b>	<b>-</b>	<b>36,778</b>	<b>181,131</b>
<b>ALBAY</b>		<b>30,240</b>	<b>150,654</b>	<b>-</b>	<b>30,240</b>	<b>150,654</b>	<b>-</b>	<b>-</b>	<b>30,240</b>	<b>150,654</b>
CAMALIG		1,720	8,600		1,720	8,600			1,720	8,600
DARAGA		2,900	14,500		2,900	14,500			2,900	14,500
GUINOBATAN		2,066	10,330		2,066	10,330			2,066	10,330
LIBON		4,928	24,640		4,928	24,640			4,928	24,640
MALILIPOT		2,900	14,500		2,900	14,500			2,900	14,500
OAS		7,393	36,965		7,393	36,965			7,393	36,965
PIO DURAN		617	2,539		617	2,539			617	2,539
POLANGUI		3,700	18,500		3,700	18,500			3,700	18,500
RAPU-RAPU		4,016	20,080		4,016	20,080			4,016	20,080
<b>CAMARINES NORTE</b>	<b>-</b>	<b>751</b>	<b>2,508</b>	<b>0</b>	<b>751</b>	<b>2,508</b>	<b>-</b>	<b>-</b>	<b>751</b>	<b>2,508</b>
LABO		9	31		9	31			9	31
PARACALE		37	143		37	143			37	143
TALISAY		109	328		109	328			109	328
VINZONS		596	2,006		596	2,006			596	2,006
<b>CAMARINES SUR</b>	<b>-</b>	<b>1,359</b>	<b>6,335</b>	<b>0</b>	<b>1,359</b>	<b>6,335</b>	<b>-</b>	<b>-</b>	<b>1,359</b>	<b>6,335</b>
CALABANGA		760	2,968		760	2,968			760	2,968
CARAMOAN		203	1,292		203	1,292			203	1,292
DEL GALLEGO		144	713		144	713			144	713
GOA		27	250		27	250			27	250
NAGA CITY		11	44		11	44			11	44
SAN JOSE		45	178		45	178			45	178
TINAMBAC		169	890		169	890			169	890
<b>CATANDUANES</b>	<b>-</b>	<b>591</b>	<b>2,878</b>	<b>-</b>	<b>591</b>	<b>2,870</b>	<b>-</b>	<b>-</b>	<b>591</b>	<b>2,870</b>
BAGAMANOC		3	13		3	13			3	13
BARAS		94	505		94	505			94	505
BATO		116	537		116	537			116	537
GIGMOTO		51	225		51	225			51	225
PANDAN		202	1,010		202	1,010			202	1,010
SAN ANDRES (CALOLBON)		3	27		3	19			3	19
SAN MIGUEL		36	180		36	180			36	180
VIRAC		86	381		86	381			86	381
<b>MASBATE</b>	<b>-</b>	<b>3,178</b>	<b>13,778</b>	<b>0</b>	<b>2,926</b>	<b>13,251</b>	<b>-</b>	<b>-</b>	<b>2,926</b>	<b>13,251</b>
IBALUD		35	175		35	175			35	175
BATUAN		246	1,126		246	1,126			246	1,126
CATAINGAN		58	261		58	261			58	261
CAWAYAN		578	2,091		326	1,564			326	1,564
DIMASALANG		202	1,080		202	1,080			202	1,080
ESPERANZA		379	1,700		379	1,700			379	1,700
MASBATE CITY		96	465		96	465			96	465
MOBO		544	2,477		544	2,477			544	2,477
MONREAL		385	1,159		385	1,159			385	1,159
PALANAS		533	2,658		533	2,658			533	2,658
USON		122	586		122	586			122	586
<b>SORSOGON</b>	<b>-</b>	<b>1,291</b>	<b>5,513</b>	<b>0</b>	<b>911</b>	<b>5,513</b>	<b>-</b>	<b>-</b>	<b>911</b>	<b>5,513</b>
BARCELONA		422	1,400		42	1,400			42	1,400
BULAN		212	1,032		212	1,032			212	1,032
CASIGURAN		153	761		153	761			153	761
DONSOL		110	445		110	445			110	445
JUBAN		112	577		112	577			112	577
MAGALLANES		113	453		113	453			113	453
MATNOG		169	845		169	845			169	845
<b>REGION VI (WESTERN VISAYAS)</b>	<b>-</b>	<b>52,079</b>	<b>219,966</b>	<b>0</b>	<b>51,390</b>	<b>215,749</b>	<b>-</b>	<b>-</b>	<b>51,390</b>	<b>215,749</b>
<b>AKLAN</b>	<b>-</b>	<b>4,785</b>	<b>22,056</b>	<b>0</b>	<b>4,785</b>	<b>22,056</b>	<b>-</b>	<b>-</b>	<b>4,785</b>	<b>22,056</b>
ALTAVAS		1,075	3,982		1,075	3,982			1,075	3,982
BALETE		17	65		17	65			17	65
BANGA		195	1,266		195	1,266			195	1,266
BATAN		42	210		42	210			42	210
BURUANGA		129	415		129	415			129	415
IBAJAY		157	670		157	670			157	670
LEZO		200	822		200	822			200	822
MAKATO		314	1,008		314	1,008			314	1,008
MALAY		45	123		45	123			45	123
MALINAO		93	520		93	520			93	520
NABAS		600	3,000		600	3,000			600	3,000
NEW WASHINGTON		800	4,423		800	4,423			800	4,423
NUMANCIA		41	167		41	167			41	167
TANGALAN		1,077	5,385		1,077	5,385			1,077	5,385
<b>ANTIQUE</b>	<b>-</b>	<b>7,778</b>	<b>32,000</b>	<b>0</b>	<b>7,778</b>	<b>32,000</b>	<b>-</b>	<b>-</b>	<b>7,778</b>	<b>32,000</b>
ANINI-Y		124	690		124	690			124	690
BARBAZA		492	1,235		492	1,235			492	1,235
BELISON		221	730		221	730			221	730
BUGASONG		1,313	5,458		1,313	5,458			1,313	5,458
CALUYA		107	640		107	640			107	640
CULASI		708	2,685		708	2,685			708	2,685
HAMTIC		467	1,764		467	1,764			467	1,764
LAJUAN		233	581		233	581			233	581
LIBERTAD		330	753		330	753			330	753
PANDAN		1,096	6,576		1,096	6,576			1,096	6,576
PATNONGON		178	776		178	776			178	776
SAN JOSE		370	1,372		370	1,372			370	1,372
SEBASTE		165	825		165	825			165	825
SIBALOM		696	2,628		696	2,628			696	2,628
TIBIAO		683	3,415		683	3,415			683	3,415
TOBIAS FORNIER (DAO)		519	1,492		519	1,492			519	1,492
VALDERRAMA		76	380		76	380			76	380
<b>CAPIZ</b>	<b>-</b>	<b>21,482</b>	<b>91,656</b>	<b>0</b>	<b>21,446</b>	<b>90,416</b>	<b>-</b>	<b>-</b>	<b>21,446</b>	<b>90,416</b>
CUARTERO		1,294	5,012		1,294	5,012			1,294	5,012
DAO		1,041	5,310		1,005	4,070			1,005	4,070
DUMALAG		1,642	6,209		1,642	6,209			1,642	6,209
DUMARAO		1,100	4,861		1,100	4,861			1,100	4,861
IVISAN		1,729	6,289		1,729	6,289			1,729	6,289

Region/Province/ Muni/City	AFFECTED			No. of Evac Centers	Inside Evacuation Centers		Outside Evacuation Centers		TOTAL SERVED - CURRENT (Inside + Outside)	
	Brgys	Families	Persons		Families	Persons	Families	Persons	Families	Persons
JAMINDAN		1,297	5,074		1,297	5,074			1,297	5,074
MA-AYON		1,220	5,283		1,220	5,283			1,220	5,283
PANAY		1,148	7,447		1,148	7,447			1,148	7,447
PANITAN		745	2,871		745	2,871			745	2,871
PILAR		1,332	4,530		1,332	4,530			1,332	4,530
PONTEVEDRA		2,478	9,934		2,478	9,934			2,478	9,934
PRESIDENT ROXAS		347	1,346		347	1,346			347	1,346
ROXAS CITY		3,570	17,184		3,570	17,184			3,570	17,184
SAPI-AN		855	3,385		855	3,385			855	3,385
SIGMA		1,139	5,695		1,139	5,695			1,139	5,695
TAPAZ		545	1,226		545	1,226			545	1,226
GUIMARAS	-	598	2,531	0	598	2,111	-	-	598	2,111
BUENAVISTA		237	930		237	510			237	510
JORDAN		49	172		49	172			49	172
NUEVA VALENCIA		179	811		179	811			179	811
SIBUNAG		133	618		133	618			133	618
ILOILO	-	12,863	54,811	0	12,863	54,811	-	-	12,863	54,811
AJUJY		1,034	4,717		1,034	4,717			1,034	4,717
ANILAO		18	89		18	89			18	89
BALASAN		159	711		159	711			159	711
BANATE		224	1,535		224	1,535			224	1,535
BAROTAC NUEVO		64	282		64	282			64	282
BAROTAC VIEJO		290	1,740		290	1,740			290	1,740
BATAD		1,321	6,605		1,321	6,605			1,321	6,605
BINGAWAN		54	289		54	289			54	289
CARLES		1,724	8,219		1,724	8,219			1,724	8,219
CONCEPCION		1,244	5,461		1,244	5,461			1,244	5,461
DUEÑAS		41	205		41	205			41	205
DUMANGAS		510	2,608		510	2,608			510	2,608
ESTANCIA		643	2,764		643	2,764			643	2,764
GUIMBAL		20	94		20	94			20	94
JANIUAY		39	195		39	195			39	195
LAMBUNAO		265	1,123		265	1,123			265	1,123
LEMERY		1,511	5,741		1,511	5,741			1,511	5,741
PASSI		356	1,420		356	1,420			356	1,420
POTOTAN		10	50		10	50			10	50
SAN DIONISIO		856	3,257		856	3,257			856	3,257
SAN ENRIQUE		10	50		10	50			10	50
SAN RAFAEL		262	1,146		262	1,146			262	1,146
SARA		2,208	6,510		2,208	6,510			2,208	6,510
NEGROS OCCIDENTAL	-	4,573	16,912	0	3,920	14,355	-	-	3,920	14,355
BACOLOD		685	2,481		685	2,481			685	2,481
BAGO		277	1,302		277	1,302			277	1,302
CADIZ		289	1,156		289	1,156			289	1,156
CALATRAVA		119	378		119	378			119	378
ENRIQUE B. MAGALONA (SARAVIA)		29	111		29	111			29	111
ESCALANTE		659	2,585		6	28			6	28
MANAPLA		1,059	2,624		1,059	2,624			1,059	2,624
MURCIA		4	102		4	102			4	102
PONTEVEDRA		70	299		70	299			70	299
PULUPANDAN		80	283		80	283			80	283
SAGAY		268	1,072		268	1,072			268	1,072
SAN CARLOS		110	440		110	440			110	440
SILAY		240	1,343		240	1,343			240	1,343
TOBOSO		454	1,816		454	1,816			454	1,816
VICTORIAS		230	920		230	920			230	920
REGION VII (CENTRAL VISAYAS)	-	33,122	140,830	0	32,271	136,880	842	3,904	33,113	140,784
BOHOL	-	5,449	26,042	0	5,243	25,105	206	937	5,449	26,042
CANDIJAY		2,518	9,771		2,518	9,771			2,518	9,771
JAGNA		558	1,987		433	1,429	125	558	558	1,987
MABINI		246	1,189		242	1,176	4	13	246	1,189
PRES. CARLOS P. GARCIA (PITOGO)		556	6,147		556	6,147			556	6,147
TAGBILARAN CITY		39	196		39	196			39	196
TUBIGON		490	1,797		479	1,761	11	36	490	1,797
UBAY		1,042	4,955		976	4,625	66	330	1,042	4,955
CEBU	-	22,555	93,396	0	21,910	90,383	636	2,967	22,546	93,350
BANTAYAN		3,787	15,870		3,664	15,433	123	437	3,787	15,870
BOGO		1,958	6,959		1,958	6,949	2	10	1,958	6,959
CATMON		249	1,082		249	1,082			249	1,082
CEBU CITY		3,388	15,836		3,388	15,836			3,388	15,836
COMPOSTELA		51	253		51	253			51	253
DAANBANTAYAN		1,364	2,110		1,364	2,110			1,364	2,110
GINATILAN		121	560		121	560			121	560
MANDAUE		1,732	9,968		1,732	9,968			1,732	9,968
MEDELLIN		1,428	5,497		1,419	5,451			1,419	5,451
NAGA		267	1,243		267	1,243			267	1,243
PORO		59	461		59	461			59	461
SAN REMIGIO		994	3,726		994	3,726			994	3,726
SANTA FE		1,000	3,908		978	3,834	22	74	1,000	3,908
TABOGON		532	2,336		532	2,336			532	2,336
TALISAY		683	3,423		683	3,423			683	3,423
TUBURAN		4,210	17,565		3,858	15,632	352	1,933	4,210	17,565
TUDELA		732	2,599		595	2,086	137	513	732	2,599
NEGROS ORIENTAL	-	5,054	21,140	0	5,054	21,140	-	-	5,054	21,140
AMLAN (AYUQUITAN)		37	185		37	185			37	185
AYUNGON		430	2,150		430	2,150			430	2,150
BASAY		215	1,075		215	1,075			215	1,075
BAYAWAN (TULONG)		3,000	11,000		3,000	11,000			3,000	11,000
BINDOY (PAYABON)		367	1,835		367	1,835			367	1,835
JIMALALUD		2	10		2	10			2	10
SIATON		453	2,265		453	2,265			453	2,265
SIBULAN		25	125		25	125			25	125
TANJAY		15	75		15	75			15	75
TAYASAN		26	115		26	115			26	115
VALENCIA (LUZURRIAGA)		243	1,215		243	1,215			243	1,215
VALLEHERMOSO		241	1,090		241	1,090			241	1,090
SIQUIJOR	-	64	252	0	64	252	-	-	64	252
ENRIQUE VILLANUEVA		51	182		51	182			51	182
MARIA		7	41		7	41			7	41
SIQUIJOR		6	29		6	29			6	29
REGION VIII (EASTERN VISAYAS)	-	62,080	309,158	0	62,080	309,158	-	-	62,080	309,158
BILIRAN	-	374	1,870	0	374	1,870	-	-	374	1,870
ALMERIA		8	40		8	40			8	40
CABUCGAYAN		103	515		103	515			103	515
CAIBIRAN		79	395		79	395			79	395
CULABA		150	750		150	750			150	750

Region/Province/ Mun/City	AFFECTED			No. of Evac Centers	Inside Evacuation Centers		Outside Evacuation Centers		TOTAL SERVED - CURRENT (Inside + Outside)	
	Brgys	Families	Persons		Families	Persons	Families	Persons	Families	Persons
MARIPIPI		2	10		2	10			2	10
NAVAL		32	160		32	160			32	160
<b>EASTERN SAMAR</b>	-	<b>4,216</b>	<b>21,080</b>	<b>0</b>	<b>4,216</b>	<b>21,080</b>	-	-	<b>4,216</b>	<b>21,080</b>
ARTECHE		1,161	5,805		1,161	5,805			1,161	5,805
BALANGKAYAN		2,424	12,120		2,424	12,120			2,424	12,120
CAN-AVID		184	920		184	920			184	920
SAN JULIAN		118	590		118	590			118	590
TAFT		329	1,645		329	1,645			329	1,645
<b>LEYTE</b>	-	<b>5,218</b>	<b>26,090</b>	<b>0</b>	<b>5,218</b>	<b>26,090</b>	-	-	<b>5,218</b>	<b>26,090</b>
BAYBAY		200	1,000		200	1,000			200	1,000
HILONGOS		262	1,310		262	1,310			262	1,310
MATALOM		78	390		78	390			78	390
TACLOBAN		3,459	17,295		3,459	17,295			3,459	17,295
TOLOSA		1,219	6,095		1,219	6,095			1,219	6,095
<b>NORTHERN SAMAR</b>	-	<b>2,862</b>	<b>14,310</b>	<b>0</b>	<b>2,862</b>	<b>14,310</b>	-	-	<b>2,862</b>	<b>14,310</b>
ALLEN		200	1,000		200	1,000			200	1,000
BIRI		550	2,750		550	2,750			550	2,750
CAPUL		300	1,500		300	1,500			300	1,500
CATARMAN		300	1,500		300	1,500			300	1,500
CATUBIG		20	100		20	100			20	100
GAMAY		100	500		100	500			100	500
LAOANG		200	1,000		200	1,000			200	1,000
LAPINIG		150	750		150	750			150	750
LAS NAVAS		45	225		45	225			45	225
LAVEZARES		20	100		20	100			20	100
LOPE DE VEGA		90	450		90	450			90	450
MAPANAS		70	350		70	350			70	350
MONDRAGON		300	1,500		300	1,500			300	1,500
PALAPAG		400	2,000		400	2,000			400	2,000
PAMBUJAN		50	250		50	250			50	250
SAN ANTONIO		47	235		47	235			47	235
SAN JOSE		20	100		20	100			20	100
<b>SAMAR (WESTERN SAMAR)</b>	-	<b>47,058</b>	<b>235,290</b>	<b>0</b>	<b>47,058</b>	<b>235,290</b>	-	-	<b>47,058</b>	<b>235,290</b>
ALMAGRO		1,126	5,630		1,126	5,630			1,126	5,630
BASEY		6,016	30,080		6,016	30,080			6,016	30,080
CALBAYOG		1,500	7,500		1,500	7,500			1,500	7,500
CALBIGA		5,393	26,965		5,393	26,965			5,393	26,965
CATBALOGAN		4,800	24,000		4,800	24,000			4,800	24,000
DARAM		7,000	35,000		7,000	35,000			7,000	35,000
JIABONG		120	600		120	600			120	600
MARABUT		1,198	5,990		1,198	5,990			1,198	5,990
MATUGUINAO		34	170		34	170			34	170
MOTIONG		2,250	11,250		2,250	11,250			2,250	11,250
PAGSANGHAN		500	2,500		500	2,500			500	2,500
PARANAS (WRIGHT)		17	85		17	85			17	85
PINABACDAO		2,269	11,345		2,269	11,345			2,269	11,345
SAN JORGE		3,458	17,290		3,458	17,290			3,458	17,290
SAN JOSE DE BUAN		150	750		150	750			150	750
SAN SEBASTIAN		745	3,725		745	3,725			745	3,725
SANTA MARGARITA		2,440	12,200		2,440	12,200			2,440	12,200
TAGAPUL-AN		1,515	7,575		1,515	7,575			1,515	7,575
TALALORA		1,602	8,010		1,602	8,010			1,602	8,010
VILLAREAL		1,500	7,500		1,500	7,500			1,500	7,500
ZUMARRAGA		3,425	17,125		3,425	17,125			3,425	17,125
<b>SOUTHERN LEYTE</b>	-	<b>2,352</b>	<b>10,518</b>	<b>0</b>	<b>2,352</b>	<b>10,518</b>	-	-	<b>2,352</b>	<b>10,518</b>
HINUNANGAN		70	350		70	350			70	350
LIBAGON		276	138		276	138			276	138
LIMASAWA		17	85		17	85			17	85
MAASIN		276	1,380		276	1,380			276	1,380
MACROHON		1,547	7,735		1,547	7,735			1,547	7,735
PADRE BURGOS		136	680		136	680			136	680
TOMAS OPPUS		30	150		30	150			30	150
<b>REGION XIII (CARAGA)</b>	<b>243</b>	<b>33,831</b>	<b>156,167</b>	<b>0</b>	<b>3,007</b>	<b>12,625</b>	-	-	<b>3,007</b>	<b>12,625</b>
<b>AGUSAN DEL NORTE</b>	<b>26</b>	<b>1,770</b>	<b>9,704</b>	<b>0</b>	-	-	-	-	<b>3,007</b>	<b>12,625</b>
BUENAVISTA	2	45	174		-	-	-	-	-	-
BUTUAN CITY	9	677	3,385		-	-	-	-	-	-
CABADBARAN	7	565	3,812		-	-	-	-	-	-
CARMEN	3	107	453		-	-	-	-	-	-
JABONGA	1	22	110		-	-	-	-	-	-
KITCHARAO	1	18	90		-	-	-	-	-	-
MAGALLANES	1	173	865		-	-	-	-	-	-
TUBAY	2	163	816		-	-	-	-	-	-
<b>AGUSAN DEL SUR</b>	-	<b>322</b>	<b>1,610</b>	<b>0</b>	<b>32</b>	<b>1,610</b>	-	-	<b>32</b>	<b>1,610</b>
LORETO		322	1,610		32	1,610			32	1,610
<b>DINAGAT ISLANDS</b>	<b>65</b>	<b>9,089</b>	<b>38,250</b>	<b>0</b>	<b>2,823</b>	<b>10,504</b>	-	-	<b>2,823</b>	<b>10,504</b>
BASILISA (RIZAL)	20	2,719	9,522		2,132	7,252			2,132	7,252
CAGDIANAO		1,368	5,385		-	-			-	-
DINAGAT	12	732	3,685		-	-			-	-
LIBJO (ALBOR)	7	882	4,021		691	3,252			691	3,252
LORETO	6	894	4,970		-	-			-	-
SAN JOSE	12	1,676	7,145		-	-			-	-
TUBAJON	8	718	3,542		-	-			-	-
<b>SURIGAO DEL NORTE</b>	<b>113</b>	<b>17,356</b>	<b>80,746</b>	<b>0</b>	<b>152</b>	<b>511</b>	-	-	<b>152</b>	<b>511</b>
ALEGRIA	2	13	139		-	-			-	-
BACUAG	1	97	439		-	-			-	-
BURGOS	5	417	1,899		-	-			-	-
CLAVER	8	468	1,972		-	-			-	-
DAPA	12	297	1,209		-	-			-	-
DEL CARMEN	8	503	2,278		55	231			55	231
GENERAL LUNA	2	4	22		-	-			-	-
GIGAQUIT	4	150	621		-	-			-	-
MAINIT	2	23	96		-	-			-	-
MALIMONO	12	1,393	4,892		-	-			-	-
PILAR	7	298	1,518		-	-			-	-
PLACER	14	417	1,211		-	-			-	-
SAN BENITO	3	116	372		97	280			97	280
SAN ISIDRO	8	11,169	55,845		-	-			-	-
SANTA MONICA (SAPAO)	4	164	580		-	-			-	-
SISON	1	12	35		-	-			-	-
SURIGAO CITY	5	884	4,103		-	-			-	-
TAGANA-AN	6	332	1,308		-	-			-	-
TUBOD	9	599	2,207		-	-			-	-
<b>SURIGAO DEL SUR</b>	<b>39</b>	<b>5,294</b>	<b>25,857</b>	<b>0</b>	-	-	-	-	-	-
BAYABAS	4	349	1,623		-	-			-	-
CAGWAIT	5	409	1,961		-	-			-	-



Region/Province/ Mun/City	AFFECTED			No. of Evac Centers	Inside Evacuation Centers		Outside Evacuation Centers		TOTAL SERVED - CURRENT (Inside + Outside)	
	Brgys	Families	Persons		Families	Persons	Families	Persons	Families	Persons
CORTES	1	162	892		-	-			-	-
HINATUAN	3	180	712		-	-			-	-
LANUZA	7	389	1,750		-	-			-	-
LINGIG	1	10	60		-	-			-	-
MARIHATAG	1	59	255		-	-			-	-
TANDAG	17	3,736	18,614		-	-			-	-

**Typhoon "RUBY" (Hagupit)  
CLASS SUSPENSION  
As of 08 December 2014, 6:00PM**

REGION	LGUs / AREA	SUSPENDED CLASSES	EFFECTIVITY DATE/S
REGION III	Bataan Province	All Levels	8 December 2014
	Bulacan Province		
	Candaba, Pampanga		
	Floridablanca, Pampanga		
	Guagua, Pampanga		
	Lubao, Pampanga		
	Mabalacat City, Pampanga		
	Mexico, Pampanga		
	Minalin, Pampanga		
	San Fernando City, Pampanga		
	San Simon, Pampanga		
	Sasmuan, Pampanga		
Sta. Ana, Pampanga			
Sto. Tomas, Pampanga			
REGION IV-A	Cavite Province	All Levels	8-9 December 2014
	Laguna Province		8-9 December 2014
	Batangas Province		8-9 December 2014
	Rizal Province		8-9 December 2014
	Quezon Province		8-9 December 2014
REGION IV-B	Abra de Ilog, Occidental Mindoro	All Levels	8 December 2014
	Looc, Occidental Mindoro	All Levels	8 December 2014
	Magsasay, Occidental Mindoro	Primary & Secondary Levels	8 December 2014
	San Jose, Occidental Mindoro	All Levels	8 December 2014
	Sablayan, Occidental Mindoro	All Levels	8 December 2014
	Oriental Mindoro Province	All Levels	8 December 2014
	Calapan City, Oriental Mindoro	All Levels	8-9 December 2014
	Marinduque Province	All Levels	8 December 2014
	Romblon Province	All Levels	8 December 2014
	Agutaya, Palawan	Primary & Secondary Levels	8 December 2014
	Busuanga, Palawan	Pre-School to Secondary Levels	8 December 2014
	Coron, Palawan	All Levels	8 December 2014
	Culion, Palawan	Pre-School to Secondary Levels	8 December 2014
	Dumaran, Palawan	All Levels	8 December 2014
	Linapacan	Primary & Secondary Levels	8 December 2014
Palawan, Palawan	Pre-School to Secondary Levels	8 December 2014	
Taytay, Palawan	All Levels	8 December 2014	
REGION V	Albay Province	All Levels	8 December 2014
	Catanduanes Province	Kindergarten & Primary Levels	8 December 2014
	Camarines Sur Province	All Levels	8 December 2014
	Camarines Norte Province	All Levels	8 December 2014
	Masbate Province	All Levels	8 December 2014
	Naga City	All Levels	8 December 2014
REGION VI	Cadiz City, Negros Occidental	Pre-School to Secondary Levels	8 December 2014
	Zarraga, Iloilo		
	Capiz Province	All Levels	
	Sagay City, Negross Occidental		
REGION VII	Bohol Province	All Levels	8 December 2014
	Cebu City	All Levels	8 December 2014
	Cebu Province	All Levels	8 December 2014
	Lapu-lapu City	All Levels	8 December 2014
	Talisay City, Cebu	All Levels	8 December 2014
	Mandaue City, Cebu	All Levels	8 December 2014
	Carcar City, Cebu	All Levels	8 December 2014
	Dumaguete City, Negros Oriental	Pre-School	8 December 2014
NCR	Parañaque City	All Levels	8-9 December 2014
	Pasay City		
	Navotas City		
	Valenzuela City		
	Pasig City		
	Muntinlupa City		
	Pateros		
	Quezon City		
	Makati City		
	Marikina City		
	Mandaluyong City		
	San Juan City		
	Las Piñas City		
	Malabon City		
	Caloocan City		
Manila City			
Taguig City			

**Typhoon "RUBY" (HAGUPIT)**  
**STATUS OF STRANDEES**  
*As of 08 December 2014, 6:00PM*

LOCATION	PASSENGERS	VESSELS	MBCAs	ROLLING CARGOES
CGDNCR-CL	340	2	-	-
CGDPAL	-	9	3	-
CGDNM	140	-	-	-
CGDBCL	363	32	-	59
CGDEV	127	1	-	-
CGDSTL	639	-	-	274
CGDWV	344	30	1	96
<b>TOTAL</b>	<b><u>1,953</u></b>	<b><u>74</u></b>	<b><u>4</u></b>	<b><u>429</u></b>

Source: PCG

**Disaster Preparedness and Response  
Preparedness Measures for Typhoon "RUBY"  
CANCELLED FLIGHTS  
As of 08 December 2014, 6:00 PM**

FLIGHT NO.	ROUTE	REMARKS
<b>INTERNATIONAL FLIGHTS</b>		
<b>JET STAR</b>		
FLIGHT NO.	ROUTE	<b>Cancelled Due Typhoon "Ruby" Effective Dec.08,2014</b>
3K 763/763	Singapore-Manila-Osaka	
3K 764/764	Osaka-Manila-Singapore	
3K 761 / 762	Manila-Singapore-Manila	
CA 180	Manila-Peking	
CA 630	Manila- China	
<b>AIR ASIA ZEST</b>		
FLIGHT NO.	ROUTE	<b>Cancelled Due Typhoon Ruby Effective Dec. 08,2014</b>
Z2 501 / 502	Manila-Kota-Kinabalu-Manila	
Z2 088 / 089	Manila-Macau-Manila	
Z2 084 / 085	Manila-Incheon-Manila	
Z2 884 / 885		
KL 807/808	Manila-Amsterdam-Manila	
Z2 948 / 949	Manila-Kuala Lumpur-Manila	
Z2 940 / 941		
Z2 018 / 019	Manila-SHANGHAI-Manila	
<b>DOMESTIC FLIGHTS</b>		
<b>AIR ASIA ZEST</b>		
FLIGHT NO.	ROUTE	<b>Cancelled Due Typhoon Ruby Effective Dec. 08,2014</b>
Z2 422 / 423 Z2 428 / 429 Z2 420 / 421 Z2 424 / 425	Manila-Puerto Prinsesa-Manila	
Z2 8302 / 8303 Z2 713 / 714 Z2 300 / 301 Z2 707 / 708 PQ 7143 / 7144 PQ 7145 / 7146	Manila-Kalibo-Manila	
Z2350 / 351 Z2 354 / 355 Z2 352 / 353	Manila-Tagbilaran-Manila	
Z2 763 / 764 Z2 382 / 383 PQ 7485 / 7484	Manila-Cebu-Manila	

FLIGHT NO.	ROUTE	REMARKS
<b>CEBU PACIFIC</b>		
FLIGHT NO.	ROUTE	
5J 513 / 514	Manila-San Jose-Manila	
5J 531 / 532		
5J 539 / 540	Manila-Busuanga-Manila	
5J 529 / 530		
5J 891 / 892	Manila -Caticlan-Manila	Cancelled Due Typhoon Ruby Effective Dec. 08,2014
5J 893 / 894		
5J 895 / 896		
5J 899 / 900		
5J 901 / 902		
5J 905 / 906		
5J 907 / 896		
5J 321 / 322	Manila-Legazpi-Manila	
5J 323 / 324		
5J 821/822	Manila-Virac-Manila	
5J 521/522	Manila-Naga-Manila	
5J 523/524	Manila-Naga-Manila	
5J 196/197	Manila-Cauayan (ISABELA)-Manila	
<b>PHILIPPINE AIRLINES</b>		
2P 2935 / 2936	Manila-Iloilo-Manila	Cancelled Due to Typhoon Ruby Effective Dec. 08, 2014
2P 2933 / 2934		
2P 2941 / 2942	Manila - Davao- Manila	
2P 2819 / 2820		
2P 2817 / 2818		
2P 2815 / 2816		
2P 2813 / 2814		
2P 2825	Manila-Cebu-Manila	
2P 2869 / 2870		
2P 2861 / 2862		
2P 2867 / 2868		
2P 2859 / 2860		
2P 2863 / 2864		
2P 2853 / 2854	Manila- Tagbilaran-Manila	
2P 2777 / 2778	Manila- Tagbilaran	
2P 2774	Manila-Laog-Manila	
2P 2198 / 2199		
2P 2196 2197		
2P 2907 / 2908	Manila-Bacolod-Manila	
2P 2909/2910		
2P 2905 / 2906		
2P 2201 / 2202	Manila-Roxas-Manila	
2P 2969 / 2970	Manila-Kalibo-Manila	
2P 2975 / 2976		
2P 2971 / 2972		

FLIGHT NO.	ROUTE	REMARKS
2P 2925 / 2926	Manila- Legazpi-Manila	Cancelled Due to Typhoon Ruby Effective Dec. 08, 2014
2P 2927 / 2928		
2P 2787 / 2788	Manila-Puerto Prinsesa-Manila	
2P 2997 / 2998	Manila-Zamboanga-Manila	
2P 2992	Zamboanga-Manila	
2P 2525 / 2526	Manila-Cagayan-Manila	
2P 2527 / 2528		
2P 2557 / 2558	Manila-Dipolog-Manila	
2P 2545 / 2546	Manila-Dumaguete-Manila	
2P 2543 / 2544		
2P 2071 / 2072	Manila-Calbayog-Manila	
2P 2079 / 2080		
2P 2031/2032	Manila-Busuanga-Manila	
2P 2033 / 2034		
2P 2265 / 2266	Manila-Naga-Manila	
2P 2261 / 2262		
2P 2987 / 2988	Manila-Tacloban-Manila	
2P 2981 / 2982		
2P 2191 / 2192		
2P 2187 / 2188		
2P 2193 / 2194		
2P 2985 / 2986		
2P 2087	Basco Batanes-Manila	
2P 2095 / 2096	Manila-Surigao-Manila	
2P 2014 / 2015	Manila-Tuguegaro-Manila	
2P 2059 / 2060	Manila-Catciclan-Manila	
2P 2049 / 2050		
2P 2053 / 2054		
2P 2045 / 2046		
2P 2057 / 2058		
2P 2039 / 2040		
2P 2051 / 2052		
2P 2043 / 2044		
2P 2041 / 2042		
2P 2063 / 2064	Manila- Masbate-Manila	
2P 2021/2022		

**Status of Power Supply**  
As of December 8, 2014 6:00PM

PROVINCE	AREAS	DATE / TIME OF OUTAGE	DATE / TIME RESTORED / REMARKS
<b>Region IV-A</b>			
<i>Quezon</i>	Atimonan	07 Dec 2014, 5:00 PM	
	Real	07 Dec 2014, 11:00 PM	
	<b>Mulanay, Macalelon and Catanauan</b>	<b>06 Dec 2014 9:24AM</b>	<b>06 Dec 2014 1:30 PM</b>
	<b>Alabat, Perez, Calauag, Hondagua Phil Flour Mill, Maguilayan, Tagkawayan, Guinyangan</b>	<b>07 Dec 2014 9:53AM</b>	<b>07 Dec 2014 4:29PM</b>
<b>Region IV-B</b>			
<i>Marinduque</i>	Torrijos, Boac, Buenavista and <b>Gasán</b>	07 Dec 2014, 12:00 AM	
<i>Oriental Mindoro</i>	Victoria, Socorro, Pola, Mansalay, Bulalacao	07 Dec 2014, 4:00 PM	
<i>Romblon</i>	Magdiwang, San Fernando, Cajidiocan, Sta. Fe, Sta. Maria, San Agustin, San Jose, Romblon, Banton, Looc	07 Dec 2014	<b>Power restored in Cajidiocan &amp; in 8 Brgys of San Fernando as of 10:30AM, 08 December 2014</b>
<b>Region V</b>			
<i>Albay</i>	Province wide	07 Dec 2014, 11:06 AM	
	<b>Malinao and Tabaco Substation</b>	<b>06 Dec 2014 12:30PM</b>	<b>06 Dec 2014 1:30PM</b>
<i>Catanduanes</i>	Province wide	07 Dec 2014, 11:06 AM	
<i>Masbate</i>	Province wide	07 Dec 2014, 11:06 AM	
<i>Sorsogon</i>	The rest of Sorsogon	06 Dec 2014, 7:53 PM	07 Dec 2014, 6:26 PM
	Bulan, Irosin	08 Dec 2014, 2:38 PM	07 Dec 2014, 3:14 PM
	<b>Guinobatan, Ligao, Polangui, Libon, Jovellar</b>	<b>07 Dec 2014, 3:41 PM</b>	<b>07 Dec 2014, 3:45 PM</b>
<i>Camarines Sur</i>	Iriga City, <b>Libmanan, Sipocot and Lupi</b>	07 Dec 2014, 4:53 AM	<b>Municipalities of San Fernando, Gainza, Camaligan, Pasacao, Pamplona and Ragay – Power has been restored per DOE report as of 10:30 AM 08 December 2014</b>

<i>Camarines Norte</i>	Province wide	07 Dec 2014	
<b>Region VI</b>			
<i>Iloilo</i>	Sara, Balasan, and Estancia	06 Dec 2014, 11:22 PM	07 Dec 2014, 4:38 PM
	San Joaquin	07 Dec 2014, 10:48 AM	
<b>Antique</b>	Hamtic, Sibalom, Anini-y and San Jose	07 Dec 2014, 10:48 AM	
<b>Region VIII</b>			
<i>Northern Samar</i>	Allen, Victoria, San Isidro, Lavezares	06 Dec 2014, 12:12 PM	
	Catubig, Gamas, Lao-ang, Pambuhan, Las Navas, Bobon, Catarman, Mondragon, San Roque, Rosario, San Jose, and Lope de Vega	06 Dec 2014, 2:36 PM	
<i>Eastern Samar</i>	Sulat, Taft, Can-avid, Dolores, Oras, San Policarpo, Arteche, Jipapad, Maslog, Borongan, San Julian, Maydolong, Llorente, Salcedo, Guiuan, MacArthur, Hernani, Quinapundan, Giporlos, Balangiga and Lawaan	06 Dec 2014, 11:04 AM	
<i>Samar</i>	Tinambacan, Oquendo, Calbayog, Sta. Margarita, Gandara, Pagsanghan, Tarangnan, Sab Jorge, Matuguinao, Marabut, Basey, Sta. Rita, Villareal, Talalora, Pinabacdao, Calbiga, Hinabangan, San Sebastian, Paranas, San Jose, Motiong, Catbalogan, and Jiabong	06 Dec 2014	
<i>Leyte</i>	Tacloban City, Palo, Babatngon	06 Dec 2014, 2:50 PM	
	Macarthur, Abuyog, Mahaplag, Mayorga, Javier	06 Dec 2014 9:20 PM	
	Carigara, Capoocan, Barugo, Jaro, Alang-Alang, Sta. Fe, San Miguel, Leyte, Calubian, Burawen, Dagami, Pastrana, Tolosa, Tanauan, Lapaz, Julita, Tabon-tabon, Dulag	06 Dec 2014 10:39 PM	
	Hilongos, Bato, Hindang, Inopacan, Matalom	06 Dec 2014 11:24 PM	
	San Agustin	06 Dec 2014 9:06 PM	
	Baybay, Ormoc City, Albueria, Merida, Kananga	07 Dec 2014 12:05 AM	07 Dec 2014, 11:05 PM
	Isabel, Merida, Palompon	07 Dec 2014 1:54 AM	
<i>Southern Leyte</i>	Sogod, Bontoc, Libagon, Silago, Lioan, St. Bernard, San Juan, Anahawan, Hinundayan, San Francisco, Pintuyan, and San Ricardo	06 Dec 2014, 3:19 PM	

Sources: DOE, NGCP, NEA, RDRRMC IV-B



**EFFECTS OF TYPHOON "RUBY"**  
**STATUS OF ROADS, BRIDGES and OTHER INFRASTRUCTURE**  
**As of 08 December 2014, 6:00 PM**

Region/Province/Municipality	BRIDGE/ROAD/OTHER	Status	REMARKS/CAUSE
<b>Region IV-A</b>			
<b>Quezon</b>			
	Old Zigzag Road (Pagbilao to Atimonan, Quezon)	Not passable	Due to risk of falling debris
	Buenavista Bridge, Brgy. Lilukin, Buenavista	Not passable	due to high water level
<b>Region IV-B</b>			
<b>Romblon</b>			
San Fernando	K021+000-K027+000 Sibuyan Circumferential Road, Brgy. Taclobo and Brgy. Espana, San Fernando	Not passable to light vehicles	Due to flooding
<b>Region V</b>			
<b>Catanduanes</b>			
Catanduanes DEO	San Miguel - Viga Road Kanlanka Spillway, K0039+700	Hardly passable	Due to flooding
	Junction Panganiban - Sabloyon		Due to landslide
	Catanduanes Circumferential Road, K0069+400 - K0070+400 Brgy. Hinipaan, Bagamanoc	Hardly passable	
	Catanduanes Circumferential Road, K0008+800, Balongbong Bridge Detour, Brgy. Sibacungan, Bato		Hardly passable
	K0140+020, Bocon Spillway, Brgy Caramoran	Hardly passable	
	50+000 along Jct Tawa-Balud road	Not passable	Due to flooding
Masbate I DEO	Cataingan - Placer Road Banadero Detour K008+280	Not passable	Due to flooding
	Junction Crossing Mandaon Road K0050+000, Batongan Spillway	Not passable	Due to flooding
<b>Region VIII</b>			
<b>Biliran</b>			
Biliran DEO	Biliran Circumferential Road Detour	Not passable	Due to flooding, detour bridge in Caibiran
<b>Leyte</b>			
Leyte I DEO	Bagahupi-Babatngon Road K907+000 - K0908+000	Not passable to light vehicles	Due to flooding
	Tigbao Pulak Sta. Fe Road, K911+000 - K912+400		
	San Miguel - Santol Road, K947+000-K948+000		
Leyte II DEO	Binahaan River spillway at Brgy. Tingib, K0951 along Jaro-Dagami Road	Not passable	Due to flooding
Leyte IV DEO	Palompon - Isabel- Merida - Ormoc Road	Not passable	Due to flooding, detour road Macatol Bridge
	Libungao - Matag - ob - Palompon Road	Hardly passable	Due to flooding
	Merida - Lundag -Puting Bato - Consolacion - Isabel Road	Hardly passable	Due to flooding
Leyte V DEO	Lapaz-Javier-Bito Road K0969+300 - K0969+800, Brgy. Inayupan, Javier, Leyte	Not passable	Due to flooding
Southern Leyte DEO	Maharlika Highway	Hardly passable	Due to fallen trees and utility posts
<b>Samar</b>			
	Catbalogan - Buray Road	Passable	Due to landslide in Brgy. Jia-an, Jiabong, Samar
	Buray - Taft Road	Passable	Due to flooding in Brgy. Malinao, Taft; Easter Samar and Brgy Lokilokon, Paranas, Samar
	Buray - Tacloban Road	Passable	Due to flooding in Calbiga and Brgy. Tulay, Sta. Rita

	Sta. Rita - Borongan	<b>Passable</b>	Due to landslide in Camada, Borongan
	Catbalogan - Catarman South Road	<b>Passable</b>	Due to uprooted trees in Oquendo, Calbayog
	Catbalogan - Catarman Via Allen	<b>Passable</b>	Due to toppled electric post in Bobon, Northern Samar
Samar I DEO	Calbayog-Catarman, K804+000 via Lope de Vega Road	Not passable	Uprooted trees
Samar II DEO	Maharlika Highway K871+900, Brgy Tulay, Sta. Rita, Samar	<b>Passable</b>	Due to flooding
Eastern Samar DEO	Junction Taft - Oras – San Policarpio - Arteche Road	<b>Passable</b>	Due to landslide
Northern Samar I DEO	Catarman - Calbayog Road K0751+000 - K0753+800 , Brgy. Sumuhi	<b>Passable</b>	Due to flooding, intermittent section

<i>Roads</i>	<b>9</b>
<i>Bridges</i>	<b>1</b>

**Effects of Typhoon "RUBY" (Hagupit)**  
**Cost of Assistance**  
**As of 08 December 2014, 6:00 PM**

Region/Province/Mun/City	DSWD	DOH	LGUs	NGOs/Other GOs	TOTAL
<b>GRAND TOTAL</b>	<b>53,724,866.40</b>	<b>-</b>	<b>6,993,390.10</b>	<b>-</b>	<b><u>60,718,256.50</u></b>
<b>REGION IV-A</b>	<b>12,253,850.00</b>	<b>-</b>	<b>-</b>	<b>-</b>	<b>12,253,850.00</b>
BATANGAS	2,445,300.00				2,445,300.00
CAVITE	407,550.00				407,550.00
LAGUNA	4,325,500.00				4,325,500.00
QUEZON	4,075,500.00				4,075,500.00
RIZAL	1,000,000.00				1,000,000.00
<b>REGION IV-B</b>	<b>3,468,138.00</b>	<b>-</b>	<b>-</b>	<b>-</b>	<b>3,468,138.00</b>
MARINDUQUE	357,540.00				357,540.00
OCCIDENTAL MINDORO	715,080.00				715,080.00
ORIENTAL MINDORO	715,080.00				715,080.00
PALAWAN	1,072,620.00				1,072,620.00
ROMBLON	607,818.00				607,818.00
<b>REGION V</b>	<b>8,940,128.00</b>	<b>-</b>	<b>4,936,856.00</b>	<b>-</b>	<b>13,876,984.00</b>
ALBAY	3,037,128.00				3,037,128.00
CAMARINES NORTE	450,000.00				450,000.00
CAMARINES SUR	1,800,000.00				1,800,000.00
CATANDUANES	450,000.00				450,000.00
MASBATE	1,500,000.00		4,936,856.00		6,436,856.00
SORSOGON	1,703,000.00				1,703,000.00
<b>REGION VI</b>	<b>4,588,209.92</b>	<b>-</b>	<b>-</b>	<b>-</b>	<b>4,588,209.92</b>
CAPIZ	359,296.00				359,296.00
AKLAN	808,416.00				808,416.00
ANTIQUE	449,120.00				449,120.00
ILOILO	2,971,377.92				2,971,377.92
<b>REGION VII</b>	<b>15,623,154.00</b>	<b>-</b>	<b>56,870.00</b>	<b>-</b>	<b>15,680,024.00</b>
CEBU	15,623,154.00		56,870.00		15,680,024.00
<b>REGION XIII (CARAGA)</b>	<b>2,986,386.48</b>	<b>-</b>	<b>1,999,664.10</b>	<b>-</b>	<b>4,986,050.58</b>
AGUSAN DEL NORTE	88,265.52		369,978.60		458,244.12
DINAGAT ISLAND	1,744,394.40		482,064.50		2,226,458.90
SURIGAO DEL NORTE	1,153,726.56		1,054,007.00		2,207,733.56
SURIGAO DEL SUR	-		93,614.00		93,614.00
<b>REGION NCR</b>	<b>5,865,000.00</b>	<b>-</b>	<b>-</b>	<b>-</b>	<b>5,865,000.00</b>
CALOOCAN CITY	345,000.00				345,000.00
LAS PIÑAS	345,000.00				345,000.00
MAKATI CITY	345,000.00				345,000.00
MALABON CITY	345,000.00				345,000.00
MANDALUYONG CITY	345,000.00				345,000.00
MANILA CITY	345,000.00				345,000.00
MARIKINA CITY	345,000.00				345,000.00
MUNTINLUPA CITY	345,000.00				345,000.00
NAVOTAS CITY	345,000.00				345,000.00
PARAÑAQUE CITY	345,000.00				345,000.00
PASAY CITY	345,000.00				345,000.00
PASIG CITY	345,000.00				345,000.00
PATEROS	345,000.00				345,000.00
TAGUIG CITY	345,000.00				345,000.00
QUEZON CITY	345,000.00				345,000.00
SAN JUAN CITY	345,000.00				345,000.00
VALENZUELA CITY	345,000.00				345,000.00

## Effects of Typhoon "RUBY" (HAGUPIT)

### DISASTER RESPONSE

As of 08 December 2014, 6:00 PM

#### I. FOOD & NON FOOD ITEMS

##### 1. Department of Social Welfare and Development (DSWD)

###### DSWD FO IV-A

- Ongoing repacking of goods at 3,000 – 5,000 family food packs per day
- Continuous hauling of LGUs for their preposition goods
- A total of 5,000 family food packs is prepositioned in the Province of Batangas
- Ongoing distribution of family food packs in the 2<sup>nd</sup> District of Laguna assisted by the SWAD Team Leader
- Requested augmentation of family food packs from National Resource Operations Center

###### DSWD FO IV-B

- Made available 20,796 family food packs (FFP) to all SWADT and Regional Offices/Warehouses
- Currently repacking 3,000 family food packs in Palawan
- Procurement of additional 9,000 family food packs in Palawan
- A total of 1,694 family food packs will be transported to affected areas in Oriental Mindoro from Batangas City
- A total of 1,694 family food packs will be transported to affected areas in Romblon from Sangley Point, Cavite City
- Identified ten (10) geographically isolated areas in Palawan for the distribution of family foods packs
  - Cuyo – 300 FFP
  - Agutaya – 300 FFP
  - Magsaysay – 300 FFP
  - El Nido – 200 FFP
  - Busuanga – 200 FFP
  - Coron – 200 FFP
  - Culion – 200 FFP
  - Brookes Point – 200 FFP
  - Bataraza – 200 FFP
  - Balabac – 200 FFP

###### DSWD FO V

- Purchased 500 sacks of NFA rice and prepositioned in Masbate (200 sacks), Sorsogon (200 sacks) and Albay (100 sacks)

###### DSWD VI

- On-going procurement process for additional 1,433 sacks of rice
- Released of 200 family food packs in the Municipalities of Panay, Pontevedra and Pilar in Capiz Province and 600 food packs in Concepcion, Iloilo

###### DSWD VIII

- Stockpiled a total of 30,000 family packs and 1,506 pieces of mosquito nets and blankets
- Repacked a total 14,632 family packs/relief goods

**DSWD NCR**

- Repacking of commodities in 2 areas. A total of 53,000 food packs will be available on 07 December 2014

**2. Philippine Red Cross (PRC)**

- Deployed 2,500 relief bags, 2,500 sando bags, 500 empty sacks, six (6) life vest and six (6) helmet in the Province of Cebu
- **Distributed five (5) sacks of noodles and 10 boxes of biscuits to Magsaysay**

**3. Armed Forces of the Philippines (AFP)**

- Joint Task Force NCR is in continuous repacking of relief goods at DSWD NROC
- Bravo Company 1<sup>st</sup> (Surigao del Norte) Ready Reserve Battalion participated in the repacking and distribution of 5,000 family food packs to the seven (7) municipalities of Dinagat Island (CARAGA)
- 402<sup>nd</sup> Brigade & 15<sup>th</sup> RCDG of 120 Reservist conducted another set of repacking of goods in coordination with DSWD CARAGA in Brgy. Tiniwisan, Butuan City

**4. Regional DRRM Councils****RDRRMC II****PDRRMC Isabela**

- Distributed 1,110 family food packs to fisherfolks in coastal municipalities of Isabela (Dinapigue, Palanan, Maconacon and Divilacan)

**RDRRMC IV-A****PDRRMC Cavite**

- Distributed goods to fisherfolks good for three (3) days and informed them not to venture out in seas and alerted residents near the coastal areas against possible storm surges

**RDRRMC IV-B****PDRRMC Palawan**

- **Ongoing transfer of relief goods from DSWD to municipalities of Bulalacao, Mansalay, and Roxas**

**MDRRMC Bulalacao**

- **Provided family food packs to the families in the evacuation centers**

**RDRRMC VII****PDRRMC Cebu**

- **MDRRMC Tabogon** - distributed relief goods to evacuation centers
- **MDRRMC Pilar** - distributed food packs to some coastal barangays

**PDRRMC Siquijor**

- Distributed relief goods to 182 evacuees and rice, sardines to six (6) LGUs

**RDRRMC VIII****PDRRMC Eastern Samar**

- LGU Maslog served food packs to evacuees

## II. PCCM (PROTECTION, CAMP COORDINATION & MANAGEMENT)

### 1. Department of Social Welfare and Development (DSWD)

#### DSWD FO IV-A

- Requested all LGUs to submit list of evacuation centers in safe areas to ensure the safety of the affected families

#### DSWD FO IV-B

- Identified focal persons for food and non- food, and camp coordination and management clusters in each province
- Instructed SWADT to identify and coordinate with rental trucks and LGUs for the hauling of goods

#### DSWD VII

- Convened MSWD Officers re: Camp Management
- Evaluated and assessed the existing evacuation centers

#### DSWD NCR

- Reactivated manpower especially "PANTAWID PROGRAM" staff since 04 December 2014

### 2. Department of Education (DepEd)

#### DepEd VIII

- Identified disaster-resilient schools intended as evacuation centers

### 5. Philippine National Police (PNP)

#### PRO IV-B

- Deployed thirty-three (33) personnel to provide security assistance to the evacuees at Roxas Gymnasium and Evacuation Centers in Romblon

#### PRO VIII

- Deployed Women and Children Protection Desk (WCPD) personnel in bunkhouses/evacuation centers

### 6. Bureau of Fire Protection (BFP)

#### BFP (SRRT)

- Assisted the PNP and DSWD personnel during the evacuation and distribution of relief goods in Dinagat Islands

### 7. PHILIPPINE RED CROSS (PRC)

#### PRC ALBAY

- **Welfare Desk and First Aid station established at Gogon Elementary School evacuation center**

### 7. Regional DRRM Councils

#### RDRRMC VII

##### PDRRMC Bohol

- MDRRMC Balilihan dispatched supplies to assigned evacuation centers

#### RDRRMC CARAGA

##### PDRRMC Dinagat Islands

- Organized five (5) Disaster Preparedness and Response Assessment Teams composed of representatives from PEO, PSWDO, PHO, DepEd, PNP, BFP, PIO, DILG and PDRRMO deployed to seven (7) municipalities to monitor the activities of local DRRMCs and ensure the proper distribution of relief goods

### III. HEALTH (WASH, MEDICAL, NUTRITION & MEDICAL HEALTH PSYCHOSOCIAL SERVICES)

#### 1. Department of Health (DOH)

##### DOH II

- Mobile water purification unit is on standby for possible deployment

##### DOH IV-A

- Ten (10) response teams were deployed in each provinces
- Arranged deployment of two (2) medical / public health teams to Alabat and Southern Part of Quezon Province
- Provided drugs and medicines worth PhP 30,000 to PHTO Batangas and PhP 50,000 to Quezon
- NDP's were deployed in 150 evacuation centers to man the DOH help desk

##### DOH IV-B

- Additional medicines were packed and to be distributed in the Provinces of Romblon, Occidental and Oriental Mindoro
- Deployed NDP's and RHMP's on evacuation centers for continuous health service delivery and emergency medical assistance
- Activated SPEED in evacuation centers

##### DOH VI

- Delivered supplies and medicines to Negros Occidental and Guimaras
- Allocated medical supplies to Iloilo City
- Activated SPEED in the areas with evacuation centers
- All Development Management Officers (DMOs) in affected areas were instructed to conduct Rapid Health Assessment (RHA)
- Emphasizes the strict implementation of Milk Code in all evacuation centers
- Conducted Rapid WASH Assessment activities

##### DOH VII

- Deployed assessment team to Cebu City evacuation center to conduct RHA and WASH assessment
- Deployed NDP's to man the DOH desks in the evacuation centers

##### DOH VIII

- Deployed RHA team to Dolores, Eastern Samar

##### DOH CARAGA

- Deployed NDP teams per area with evacuation center in Surigao del Norte and Province of Dinagat Island

##### DOH NCR

- Deployed two (2) NDP's in three (3) evacuation centers
- Deployed four (4) District Teams and Mancom members in all districts
- Four (4) monitoring teams composed of DOH representatives

#### 2. Philippine Red Cross (PRC)

##### PRC IV-B

- Donated 1000 hygiene kits to CDRRMC

**PRC VI**

- Iloilo Chapter provided one (1) unit Isuzu 25 Kva- 25 watts, with voltage output of 220 upto 440 volts, current of 113 amperes, frequency of 50-60 hertz, piston displacement of 2.8 liters, diesel and has a weight of 880 kilograms Generator to the RDRRMC VI for use in case of power outage

**PRC VIII**

- Set up communications equipment in major services in Leyte and Samar
- Alerted 30 volunteers, 3 vehicles, and 2 utility vehicles for SAR

**3. Regional DRRM Councils****RDRRMC IV-B****PDRRMC Palawan**

- **Provincial Health Office will provide 24/7 free medical assistance in every hospitals. Have available ambulance, generators and portable water mainly to be used inside the hospital facilities**

**RDRRMC VII****PDRRMC Negros Oriental**

- Bais CDRRMC provided TT vaccine to CSWD, rescuers and volunteers

**IV. LOGISTICS****1. Armed Forces of the Philippines (AFP)**

- Made available units (i.e. JTGs, JTUs, TFs, TGs, DRUs, etc.) to be deployed to affected areas and to assist RDRRMCs and other agencies in the AOR in the delivery of basic services
- Accounted twenty-seven (27) Philippine Navy floating assets, twelve (12) air assets and several ground mobility assets (to include the different JTFs assets) that may be dispatched in HADR Operations
- Requested assistance from the US department thru SND support capabilities / assets on disaster assessment package, surface and airborne maritime search and rescue, air flat forms (helis and fixed wings) and intelligence, surveillance and reconnaissance support

**8ID-DRTF**

- Provided manpower, equipment, and vehicles to support disaster response and relief operation

**AFP SOLCOM**

- Deployed 25-man SAR Team with complete rescue equipment to RDRRMC OpCen to the affected areas
- **740<sup>th</sup> Combat Group, 710<sup>th</sup> SPOW, PAF personnel assisted in hauling relief goods to be provided in Oriental Mindoro**

**301<sup>st</sup> Brigade AFP**

- Alerted 9 units of DRRUs in Panay composed of: 5 units in Dingle, 1 unit in Miag-ao, 1 unit in Tapaz, 1 unit in Panitan, and 1 unit in Banga
- Provided list of available vehicles and its location to be used in times of response

**PHILIPPINE NAVY**

- Deployed three (3) Navy Vessels located at Muelle Loney, Iloilo City

**2. Department of Health (DOH)****DOH IV-A**

- Deployed 10 response teams in each province



**DOH VI**

- Requested augmentation of logistics from HEMS DOH Central Office

**3. Philippine National Police (PNP)****PRO IV-B**

- Deployed a total of 687 trained personnel in SAR Operations in different areas in the region

**PRO VIII**

- Deployed a total of 111 Regional Public Safety Battalion (RPSB) personnel as augmentation to Eastern Samar

**4. Philippine Coast Guard (PCG)****PCG STL**

- **Dispatched 10 man team DRG in Batangas area**

**4. Regional DRRM Councils****RDRRMC IV-A****PDRRMC Cavite**

- Procured and distributed additional rescue equipment and vehicles

**PDRRMC Laguna**

- Deployed manpower and equipment to strategic location on 06 December 2014

**RDRRMC IV-B****DA IV-B**

- **Clearing operations and land preparations will be conducted in coordination with National Irrigation Administration to affected agricultural areas**

**PDRRMC Palawan**

- **Twenty-five (25) Criminology students and 15 GSO employees volunteered in repacking of relief goods**
- **Team Bantay Palawan deployed 42 personnel throughout the mainland North and Calamina Group of Island**

**RDRRMC VI****PDRRMC Capiz**

- Deployed response personnel to the municipalities of Dumalag, Sigma, Panitan, and Pontevedra

**RDRRMC CARAGA****PDRRMC Surigao del Norte**

- Conducted evaluation of evacuation centers and provided potable water supply by the WASH Cluster

**V. EMERGENCY TELECOMMS****1. National Telecommunications Commission (NTC)****NTC VI**

- Provided two (2) radio frequency to augment the regular forecast broadcast of weather bulletins

## 2. Office of Civil Defense (OCD)

- Confirmed locations of Emergency Operations Centers (EOCs) and tested satellite phone link of all possible affected areas from Regional to Provincial level
- Smart Communications with available free WiFi and landlines ready for installation at the Response Cluster OpCen and affected areas

## 3. Department of Science and Technology (DOST)

### DOST IV-B

- Prepositioned two (2) satellite phones in the different provinces of MIMAROPA to augment communication system for disaster operations
- **Positioned three (3) HF radios in Romblon, Odiongan, and Cajidiocan**

## 6. Department of the Interior and Local Government (DILG)

### DILG VII

- Set-up communication lines to LGUs (2 way radio, mobile phones, landlines and internet)

## 5. Philippine Red Cross (PRC)

### PRC VI

- Iloilo Chapter provided one (1) unit Isuzu 25 Kva- 25 watts, with voltage output of 220 up to 440 volts, current of 113 amperes, frequency of 50-60 hertz, piston displacement of 2.8 liters, diesel and has a weight of 880 kilograms Generator to the RDRRMC VI for use in case of power outage

### PRC VIII

- Set up communications equipment in major services in Leyte and Samar

## 6. Armed Forces of the Philippines (AFP)

### AFP SOLCOM

- Established back-up and Emergency Communications Facility (HARRIS Radio) at the RDRRMC OpCen and CALABARZON PDRRMCs OpCen

### NAVFORSOL

- Established Radio Communications Network for real-time coordination

### 501<sup>st</sup>, 503<sup>rd</sup>, 502<sup>nd</sup> BDE

- Establish communication link at respective Provincial Disaster Operation Centers synchronized with the CDRRMC OpCen
- Search and Rescue and emergency telecommunication equipment are on standby
- Assist in the communication of warnings and advisories through brigades and battalions

## 5. Philippine National Police (PNP)

### PRO VI

- PNP Communications and Electronics Office to set-up radio communications at the RDRRMC OpCen

## 5. Regional DRRM Councils

### RDRRMC CAR

- Established back up communication system

### RDRRMC I

- Placed Emergency Telecom Kit (BGAN) and two (2) handheld satellite phone on standby

**RDRRMC IV-A**

- Set up Emergency Telecommunications (Satellite Phone) at the RDRRMC OpCen
- **Established situation and communication map of AFP deployed DRRUs in the RDRRMC OpCen**

**RDRRMC IV-B****PDRRMC Occidental Mindoro**

- **MDRRMC San Jose** - VHF radio was installed at the MDRRMC OpCen and requested telecomm companies for additional hotline numbers and free SMS service

**RDRRMC V**

- Established OCD-RDRRMC Emergency UHF Radio Communications Network in coordination with PRO5 COMMEL for easy coordination and as back-up communication

**RDRRMC VI**

Requested PNP and AFP to set up communications at RDRRMC OpCen to connect with all the units in the region

**RDRRMC VII****PDRRMC Cebu**

- Provided satellite phones to the LGUs

**REACT Phils**

- Established back-up radio communication using High Frequency (HF) radios

**RDRRMC VIII**

- **ACCESS 5** set-up communication system at the OCD Command Center and deployed personnel to different areas in the region

**VI. EDUCATION****1. Department of Education (DepEd)****DepEd VI**

- Advised suspension of classes, at all levels, to the Mayors of the Municipalities of Balasan, Estancia, and Carles

**VII. DAMAGE ASSESSMENT & NEEDS ANALYSIS****1. RDRRMC IV-A**

- **Conducted field inspection in Batangas area on 08 December 2014**
- **Chairperson of PDRRMC Quezon led the situational assessment throughout the province on 08 December 2014**
- **PDRRMC Capiz OpCen conducted Rapid Needs Assessment in their AOR**

**2. RDRRMC VII**

- **Conducted RDANA in the Northern Cebu on 08 December 2014**

**3. RDRRMC CARAGA**

- Conducted meeting re RDANA in the Province of Dinagat Islands, Siargao Islands and deployment of Team CARAGA in Eastern Visayas
- Conducted Rapid Damage Assessment and Needs Analysis (RDANA) on 07 December 2014 in the Provinces of Surigao del Norte including Siargao Islands and Dinagat Islands



# Response Clusters

## Situation Report No.8

(as of 8 December, 2014, 4:00 PM)

Typhoon Ruby

### Contents

Highlights.....	2
NDRRMC ClusterResponse.....	2
Camp Coordination and Camp Management.....	3
Needs:.....	3
Response: .....	3
Gaps & Constraints:.....	4
Food and Non-Food Items.....	4
Needs:.....	4
Response: .....	4
Gaps & Constraints: .....	5
Search, Rescue and Retrieval .....	5
Needs:.....	5
Response: .....	5
Gaps & Constraints: .....	6
Emergency Telecommunications .....	6
Needs:.....	6
Response: .....	6
Constraints:.....	6
Management of the Dead and Missing.....	6
Needs:.....	6
Response: .....	6
Gaps & Constraints: .....	7
Logistics .....	7
Needs:.....	7
Response: .....	7
Gaps & Constraints: .....	8
Health .....	8
Needs:.....	8
Response:.....	8

Education.....	9
.....	9
<b>Needs:</b> .....	9
<b>Response:</b> .....	9
<b>Gaps and Constraints:</b> .....	9
GeneralCoordination .....	12

## Highlights

- As of 8 December 2014, 2:00PM, a total of 231,995 families or 1,049,101 persons have been served inside evacuation centers. Currently, there are 3,640 Evacuation Centers.



Source: DSWD as of 8:00AM, 08 December 2014.

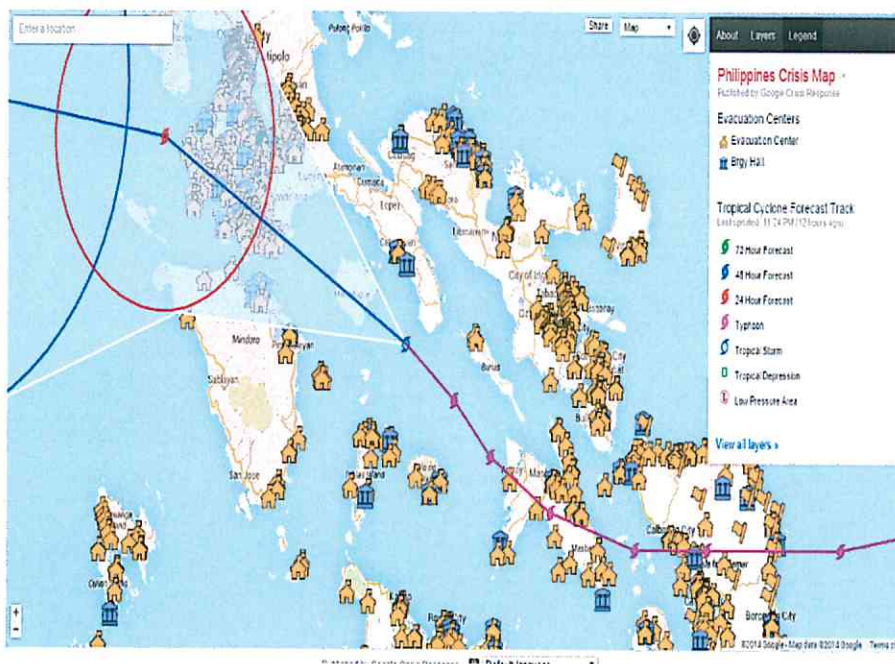
## Camp Coordination and Camp Management

### Needs:

### Response:

As of 8 December 2014, 2:00PM, a total of 231,995 families or 1,049,101 persons have been served inside evacuation centers. Currently, there are 3,640 Evacuation Centers.

The location of the evacuation centers can be seen in the map below.



There are 1,124 evacuation centers tagged in the above map as of 12MN (Dec 8). Below are the primary affected areas with mapped Evacuation Centers:

-  Tacloban-29
-  Eastern Samar-32
-  Northern Samar-30
-  Masbate-29

PNP

PRO IV-B

- 3 personnel deployed in Roxas Municipal Gymnasium, Roxas Oriental

- Mindoro for Security
  - 30 personnel deployed in Evacuation Centers in Romblon PPO for Security
  - 134 personnel deployed in Brgy. Poblacion and Brgy. Tinintinan, Araceli, Palawan PPO to assist and secure the area.
- PROVI - Assisted in the conduct of pre-emptive evacuation
- PRO VII
- Organized SAR Teams and other PNP personnel for rapid deployment and other security requirements
- PRO VIII
- Provided assistance to LGUs for pre-disaster activities and directed all unit commanders to provide security
  - Deployed Women and Children Protection Desk (WCPD) personnel bunkhouse/evacuatio Preventive evacuation has been undertaken by all PNP units in PRO 5 in coordination with PRRMCs. n centers
- PROV
- Preventive evacuation has been undertaken by all PNP units in PRO 5 in coordination with PRRMCs. n centers

#### Gaps & Constraints:



## Food and Non-Food Items

#### Needs:

#### Response:

1. Forty (40) PNP Personnel detailed to DSWD Pasay, City for repacking of relief goods
2. A total assistance of PhP 60,718,257 includes DSWD relief amounting to P 53,724,866 and LGU support amounting to PhP 6,993,390.
3. Standby funds for the projected affected regions amount to PhP 68,366,063.10. A total of PhP 105,921,539.78 worth of Family Packs, PhP110,292,427.05 worth of Food items and PhP 114,367,630.10 worth of Non-Food items are available.
4. As of 1:00pm, 08 December, 374,907 Family Food Packs remain in the warehouses of DSWD NROC and Field Offices.

5. In addition to pre-positioned and released family food packs, a total of 58,995 Family Food Packs in NROC are for allocation as of 12NN, 08 December.
6. In the NROC, a cumulative total of 637 volunteers have been contributed to FFP Production since 04 December to 12Noon of 08 December.
7. A total of PhP 13,097,664 have been accounted as relief augmentation cost to 6 Regions (Region 3, 4A, 4B, V, VI, VII).

### **Gaps & Constraints:**



## **Search, Rescue and Retrieval**

### **Needs:**

### **Response:**

PNP

PRO V

- One (1) company of RPSB is prepositioned at Pilar Port to move to Masbate;
  - PRO IV A
  - 7,139 personnel on standby for possible Search and
-



**Rescue****PRO VI**

- o 120 personnel on standby at Camp Delgado, Fort San Pedro, Iloilo City for possible augmentation to PRO8 with 3 trucks.

**Gaps & Constraints:**

## Emergency Telecommunications

**Needs:****Response:**

PNP

All affected areas of Typhoon Ruby PRO 4B, PRO5, PRO7, and PRO 8 were properly coordinated through Telecommunications (Telephone, Cellphone, Radio and Social Media)

**Constraints:**

## Management of the Dead and Missing

**Needs:****Response:**

Name	Address	Missing/Dead	Action Taken
Jen Tolosa	San Fernando, Dagami, Leyte	Missing	Dagami MPS conduct SRR
Mr. Joma Palejaro,	of BPI Branch, Tacloban City	Missing	Coordinated E. Samar PPO and Biliran PPO

report to follow

## Gaps & Constraints:



## Logistics

### Needs:

### Response:

#### DOTC

Provide status of airports

#### Airports:

1. Open and operational: Antique, Bacolod, Busuanga, Calbayog, Catarman, Caticlan, Dumaguete, Iloilo, Kalibo, Legazpi, Mactan Marinduque, Masbate, Naga, Plaridel, Puerto Princesa, Roxas, San Jose, Tagbilaran, Virac
  2. Tacloban Airport is open and operational but commercial flights are limited to smaller aircraft (DH8D, AT72) only.
  3. NOTE: For all airports open for operations, landing and take-off are still subject to the prevailing weather conditions.
  4. Information on airport operations is issued through advisories on Twitter: @DOTCPhilippines and @CAAP\_Operations
  5. Provide information on flight cancellations by issuing advisories through social media accounts (Twitter: @DOTCPhilippines, @naia\_miaa; Facebook: <https://www.facebook.com/MIAAGovPh>)
  6. Port of Batangas situation: According to PPA, no more ships at berth in Batangas Port, container stacking reduced to 2 high. Cranes are all anchored. Port protocol already in place.
-

7. Provide schedule of operations of railways (PNR/MRT/LRT)
8. PNR Operations (Dec. 8): Due to the worsening weather condition, the last train going to Alabang will depart at 3:37PM.
9. MRT3 Operations (Dec. 8): Last train from North Ave. Station will leave at 7PM. Last train from Taft Ave. Station will leave at 7:40PM.
10. LRT Operations today (Dec. 8): The last trains shall leave Roosevelt and Recto stations at 8PM for Lines 1 and 2 respectively.
11. Information on schedule of operations of railways is issued through advisories on Twitter: @DOTCPhilippines

#### PNP

##### PROIV -A

1. 120 personnel on standby for possible augmentation to PRO8 with 3 troop carrier and four hi-lux vehicles.

##### PRO VIII

2. Conducted inventory of equipment and identified 294 serviceable vehicles, 37 generator sets, 274 communication equipment and 141 SAR equipment

#### **Gaps & Constraints:**

## Health

---

#### **Needs:**

Access to transportation and communication in Borongan Area particularly in the municipality of Dolores, Catbalogan and Calbayog and Catarman in Northern Samar.

#### **Response:**

1. Activated code blue alert in DOH Central Office and Regional Offices affected/ code red alert in Regional Hospitals (Bicol Regional Teaching and Training Hospital, Bicol Medical Center and Eastern Visayas Regional Medical Center) affected.
-

2. Response teams (Foreign – 7; Local - 19) were on standby in Central Office, ready for deployment.
3. Available logistics worth 267,862,795.74.
4. 16,682 cadaver bags available in DOH – Central and Regional Offices.
5. Disseminated memo to conduct rapid assessment and monitoring of diseases in the affected areas: III, IV-A, IV-B, V, VI, VII, VIII and NCR.
6. Conducted rapid health assessment on the functionality of health facilities and conduct of health (especially on maternal and child care) and WASH services in Region V and VIII.
7. Deployed personnel (managerial and technical level) at OCD Operation Center on a 24/7 basis.
8. Continuous coordination of Central Office with Regional Offices and Hospitals
9. Continuous monitoring of Provincial Health Offices through the Regional Offices
10. Created buddy system for Regional Offices and Hospitals
11. Creation of Task Force “Ruby” conducting daily meetings since December 6, 2014

### **Gaps and Constraints:**

1. Zero accessibility in transportation (land, air, sea) to Region VIII.
2. Zero communication in Borongan Area specifically in the municipality of Dolores, Catbalogan and Calbayog.

## Education

### **Needs:**

### **Response:**

### **Gaps and Constraints:**

## Law and Order

---

**Needs:****Response:**

PNP Preparations: (Standby and Ready for Deployment)

Hardest hit: PRO 8

- 1<sup>st</sup> Priority to Augment PRO 8: (Updated)
- SAF: Deployed 132 Personnel headed by PSI JONES T ASPILAN
- PRO 10: 172 Personnel headed by PSSUPT RUSTOM C URAN ready for deployment
- PRO 11: 120 Personnel headed by PSSUPT ARIEL B ALCALA ready for deployment
- PRO 13: 120 Personnel headed by PINSP JOHN PATRICK O MAGSALOS ready for deployment
- PRO 3: 120 Personnel headed by PSINSP WALLY BITOG ready for deployment
- PRO 4A: 82 Personnel headed by PCI LOUIE DIONLAY ready for deployment
- 2<sup>nd</sup> Priority to Augment PRO 8:
- PRO 1: 120 Personnel headed by PSI ARTHUR C TAGTAG ready for deployment
- PRO 2: 120 Personnel headed by PSUPT JUAN R AGGASID ready for deployment
- PRO 5: 120 Personnel headed by PSI GLAIZA MARIE A PADUA ready for deployment
- PRO 7: 120 Personnel ready for deployment
- PRO 12: 12 Personnel ready for deployment
- PRO COR: 120 Personnel headed by PSINSP ZACARIAS DANSEN ready for deployment
- NCRPO: 120 Personnel ready for deployment
- Other areas forecast to be affected:
- PRO 5: 120 Personnel headed by PSINSP GLAIZA MARIE A PADUA ready for deployment
- PRO 6: 120 Personnel headed by PSUPT REMEDIOS CANESO ready for deployment
- PRO 7: 120 Personnel ready for deployment
- 2) PRO I
- 113 personnel on standby at PRO1 HQs for possible augmentation to PRO8 with one 6x6 truck, one troop carrier, one Kia Patrol.
- Ilocos Norte- SAR Teams on standby with the ff: 1 Rubber Boat with OBM

Other areas forecast to be affected:

**PRO 5:** 120 Personnel headed by PSINSP GLAIZA MARIE A PADUA ready for deployment

**PRO 6:** 120 Personnel headed by PSUPT REMEDIOS CANESO ready for deployment

**PRO 7:** 120 Personnel ready for deployment

2) **PRO I**

113 personnel on standby at PRO1 HQs for possible augmentation to PRO8 with one 6x6

truck, one troop carrier, one Kia Patrol.

Ilocos Norte- SAR Teams on standby with the ff: 1 Rubber Boat with OBM  
Ilocos Sur- SAR Teams on standby with the ff: 2 rubber Boats with OBM and 1 Speed Boat;

Pangasinan- SAR Teams on standby with the ff: 26 Rubber Boats with OBM and;  
RPSB- SAR Teams on standby with the ff: 1 Rubber Boat with OBM

3) PRO 11

Rescue and response assets are on standby and ready for deployment; and  
120 personnel on standby for possible augmentation to PRO8 with 1-dump truck and two generator sets.

4) PRO III

SAR personnel and equipment are on standby for possible deployment; and  
120 personnel on standby for possible augmentation to PRO8 with 3 buses.

5) PRO V

One (1) company of RPSB is prepositioned at Pilar Port to move to Masbate;  
SRR Teams on standby as augmentation forces in Burias Island and Ticao Island;  
120 personnel on standby at PRO 5 HQS for possible augmentation to PRO8 with 3 passenger bus; and  
Directed all units to activate their respective Disaster Incident Management Task Groups

Maneuver forces are intact in safe places to respond as security and SAR unit after storm

4 PNP personnel assisted Mayor Candida Gabornes of Lwaan, Eastern Samar in the successful delivery of baby girl by Mrs. Marilyn Ramonolos, 23 y/o at 9:57PM, December 6, 2014.

6) PRO CAR

Placed SAR equipment and personnel at PPOs on standby

7) PRO 10

172 personnel on standby at PRO HQ for possible augmentation to PRO 8 with the ff: 3 buses, 1 patrol car and 2 buses.

8) PRO 11

120 personnel on standby at PRO HQ for possible augmentation to PRO 8 with the ff: 3 buses.

9) PRO COR

120 personnel on standby at PRO HQ for possible augmentation to PRO 8 with 6x6 trucks (3)

10) PRO CARAGA

SAR units and equipment are ready for possible deployment  
54 personnel on standby at Surigao City, Surigao Del Norte PPO for possible augmentation to PRO8 with the ff: 6x6 truck (1), Elf truck (1), Kia Patrol (1).

---

11) NCRPO

Prepositioned Response team and equipment

121 personnel on standby at NCRPO HQs for possible augmentation to PRO8 with 2 trucks

12) SAF

128 personnel prepositioned at Sorsogon PPO for augmentation to PRO 8 with the following mobility assets: Heavy Troop Carrier (5) and KIA Troop Carrier (1)

13) NHQ

328 personnel on standby for possible augmentation to the affected regions with the following mobility assets: troop carrier (1), Elf truck (1), Rosa van (1), Coaster (2) and patrol jeep (1).

### **Gaps and Constraints:**

## **IHR**

### **Needs:**

### **Response:**

Remarks from the IHR Cluster:

The IHR Cluster, headed by the DFA, has prepared the attached GENERAL GUIDELINES ON FOREIGN HUMANITARIAN ASSISTANCE AND DISASTER RESPONSE TO TYPHOON RUBY (HAGUPIT) pending approval by members of the Cluster. This shall serve as the working draft of the NDRRMC in recognition of the urgency of the situation. We invite the members of the Cluster to submit their comments as soon as possible. DFA will seek the views of BID and BOC on the draft.

### **Gaps and Constraints:**

## **General Coordination**

---

Activities of the Response Clusters are being coordinated by the Office of Civil Defense (OCD) Operations Division and the Department of Social Welfare and Development (DSWD). Coordination meetings are held at the Response Cluster Operations Center, 2nd Floor, NDRRMC Building, Camp General Emilio Aguinaldo, Quezon City.

---

**Effects of Typhoon "RUBY" (HAGUPIT)  
DISASTER PREPAREDNESS OF NCR  
As of 08 December 2014, 6:00 PM**

**RDRRMC NCR**

- Placed on heightened alert status starting 03 December 2014:  
**LGUs Las Piñas, Manila, Makati, Malabon, Mandaluyong, Marikina, Muntinlupa, Pasay City, San Juan City, Pasig City, Navotas City, Parañaque, Quezon City, Taguig, Valenzuela, Pateros and Caloocan City**
- Placed on Alert Status
- Rescue Teams are on stand-by and response equipment prepositioned
- Alerted BDRRMCs especially in coastal areas for possible effects of the typhoon
- Disseminated advisories and updates re TY "RUBY"
- Conducted meetings for the MDRRMC re Activation of Alert Status and Pre-Disaster Risk Assessment (PDRA) for TY "RUBY" on 4 and 5 December 2014 at FCIC, MMDA, Orense St., Guadalupe, Makati City
- **Suspended classes and government work as of 08 December 2014**
- **Radio communication equipment with frequency number 143.205 and Thuraya Satellite Phone were tested**

**DSWD NCR**

- Reactivated manpower especially "Pantawid Program" staff since 04 December 2014
- Prepositioned 29,633 food packs in 3 areas specifically Legarda, Manila, NROC and SM North EDSA
- Repacking of commodities in 2 areas. A total of 53,000 food packs will be available on 07 December 2014

**DILG NCR**

- Issued Circular Order for Barangays re "Paghahanda sa Panahon ng Bagyo-Mga Payo para maging Ligas"
- **Issued "Palibot Liham" dated 05 December 2014 to all Barangay Captains, Supra Directors, City Directors, MLGOO and Cluster Heads regarding preparedness measures for TY "RUBY"**

**DOH NCR**

- On Alert Status and prepositioned medicines (Doxycyclin and Anti-Tetanus Vaccines)
- Deployed District Team Leaders with their respective DOH Representatives and KP Point Persons to concerned LGUs and DOH-NCR retained hospitals
- **Facilitated information dissemination and awareness campaign on leptospirosis thru text blast to NCR Mayors, Brgy. Captains, other LCE, employees and CHOs**



- A total of PhP 963,913.21 worth of medicines and supplies are prepositioned in LGUs
- A total of PhP 568,964.03 worth of logistics are prepositioned in DOH-NCR HEMS OPCEN
- A total of PhP 2,689,324.16 worth of available logistics in DOH NCR Pasig Warehouse

**DPWH NCR**

- Advised LGUs to reinforce support old trees

**DepEd NCR**

- Activated DRRMCs in schools

**JTF NCR**

- Placed DRTUs on stand-by and prepositioned rescue equipment and personnel
- Prepositioned/deployed assets in two (2) strategic places capable of Maritime and Ground Rescue: Intramuros (2 Medical Teams, 4 CSSR Teams, 4 WASAR Teams) and GHQ JTF NCR (2 DRTE Teams, 1 Amphibian, DRR Team)

**525<sup>th</sup> ECBU (Engineering Combat Battalion Unit)**

- Ensure preparedness of PA Disaster Response Unit for possible deployment

**DENR-MGB NCR**

- Provided RDRRMC on the status of landslide and flood prone areas in the region

**PCG NCR**

- On Alert Status and suspended operations of sea vessels as precautionary measures
- Three (3) SAR teams were put on standby alert and pre-positioned their current WASAR assets of 5 aluminium boats

**NCRPO**

- On Alert Status
- Prepositioned response team and equipment
- Placed 1,251 personnel, 44 rubber boats and 6 6x6 trucks on standby
- Manila Police District (MPD) continuously monitoring and safeguarding all vital government installations, supermarkets, department stores, malls, and markets in AOR

**BFP NCR**

- Prepositioned resources which can be utilized in evacuation, rescue and clearing operations
- Placed rescue and specialized teams on standby

**PRC Rizal Chapter**

- **Standby Emergency Response Units composed of staff and volunteers and on call Water Search and Rescue Teams (WASAR)**
- **143 volunteers are alerted to report for any untoward incidents**
- **NHQ requested one (1) WASAR Team from Makati Branch**
- **Staff and volunteers are continuously monitoring the situation in their AOR**
- **Vehicles on standby for deployment (ambulances in Pasig, Makati, Mandaluyong and Las Piñas and WASAR teams with rubber / acrylic boats are stationed in Pasig, Makati, and San Juan Branches)**
- **Activated branch staff and volunteers with designated tasks and team leaders to be on standby**

**Metro Manila Development Authority (MMDA)**

- **Composite teams are on stand-by and ready for deployment if possible in the twenty three (23) flood-prone areas in NCR**
- **Advised billboard owners to manage billboard disengagement**
- **Closely monitoring pumping stations**
- **Suspended number coding in Metro Manila effective 07 December 2014**
- **Called for an Emergency Meeting re TY "RUBY" on 08 December 2014, 11:00 AM**

**CDRRMC Manila**

- **Placed Emergency Response Assistance and Preparedness (ERAP) Command Center and Manila WASAR team on standby**
- **Alerted Barangays in coastal areas**
- **Activated the Baseco and Delpan Evacuation Centers for use of residents from coastal barangays of Baseco, Parola, Isla Puting Bato and Happyland**
- **Conducted pre-emptive evacuation of about 549 families / 2253 persons from Baseco Compound to Baseco Evacuation Center on 06 December 2014**
- **Sandbags were placed at the seawall of Roxas Blvd.**
- **Manila Police Department (MPD) continuously monitors and safe guard all vital government installations, supermarket, department stores, malls and markets in AOR**

**CDRRMC Muntinlupa**

- **Prohibited fishing and lake activity in Laguna lake**
- **Conducted tree trimming in schools and main roads**
- **Placed Generator sets and response vehicles on standby**
- **Identified evacuation areas**
- **Advised billboard owners to manage billboards disengagement**
- **Provides regular weather updates to nine (9) barangays**
- **Prepositioned PNP and BFP teams**

- Advised DepEd for the availability of school facilities for evacuees
- Prepositioned SAR team, ambulance and responders on a 24/7 basis
- Prepositioned vehicles for the transportation of relief goods
- Monitors early warning device ARG-WLS
- Ensure availability of communication equipment

#### CDRRMC Malabon

- Placed under “Preparedness Status”, all members of the MDRRMC, BDRRMC and all concerned were advised to take precautionary measures for possible intense rain, flashflood and severe wind

#### CDRRMC Marikina

- Evacuated 198 families / 848 persons from Tunasan and Nangka at H. Bautista Elementary School and Nangka Elementary School

#### CDRRMC Navotas

- Conducted pre-emptive evacuation of 20 families/100 persons from Brgy. Tanza, Navotas to Tanza Elementary School on 06 December 2014

#### CDRRMC Paranaque

- Conducted pre-emptive evacuation of 65 families/209 persons from Barangays La Huerta and Sto. Nino to La Huerta Elementary and Brgy Sto. Nino evacuation center

#### CDRRMC San Juan

- Rescue boats were pre-deployed within strategic areas for possible immediate response

### PRE-EMPTIVE EVACUATION CONDUCTED

A total of **1,731 families/7,998 persons** were pre-emptively evacuated to 19 evacuation centers:

CITY/MUNICIPALITY	NO. OF FAMILIES	NO. OF INDIVIDUALS	NAME OF EVACUATION CENTER
MANILA	807	3,732	Baseco Evacuation Center; Benigno Aquino Elementary School; Corazon Aquino Elementary School and Baseco covered court
MARIKINA	292	1,354	H. Bautista Elementary School and Nangka Elementary School
NAVOTAS	74	370	Tanza Elementary School
PARANAQUE	333	1,152	La Huerta Elementary School; San Dionisio Gym

			and Brgy. Sto. Niño Evacuation Center
MUNTINLUPA CITY	445	1870	Alabang Elementary School; Sucat Elementary School; Kupang Elementary School; ALS; Poblacion Elementary School and Brgy. Poblacion Covered Court
MALABON CITY	43	147	Potrero Elementary School; Integrated School and Dampalit Elementary School
<b>TOTAL</b>	<b>1,731</b>	<b>7,998</b>	