



Disaster Response

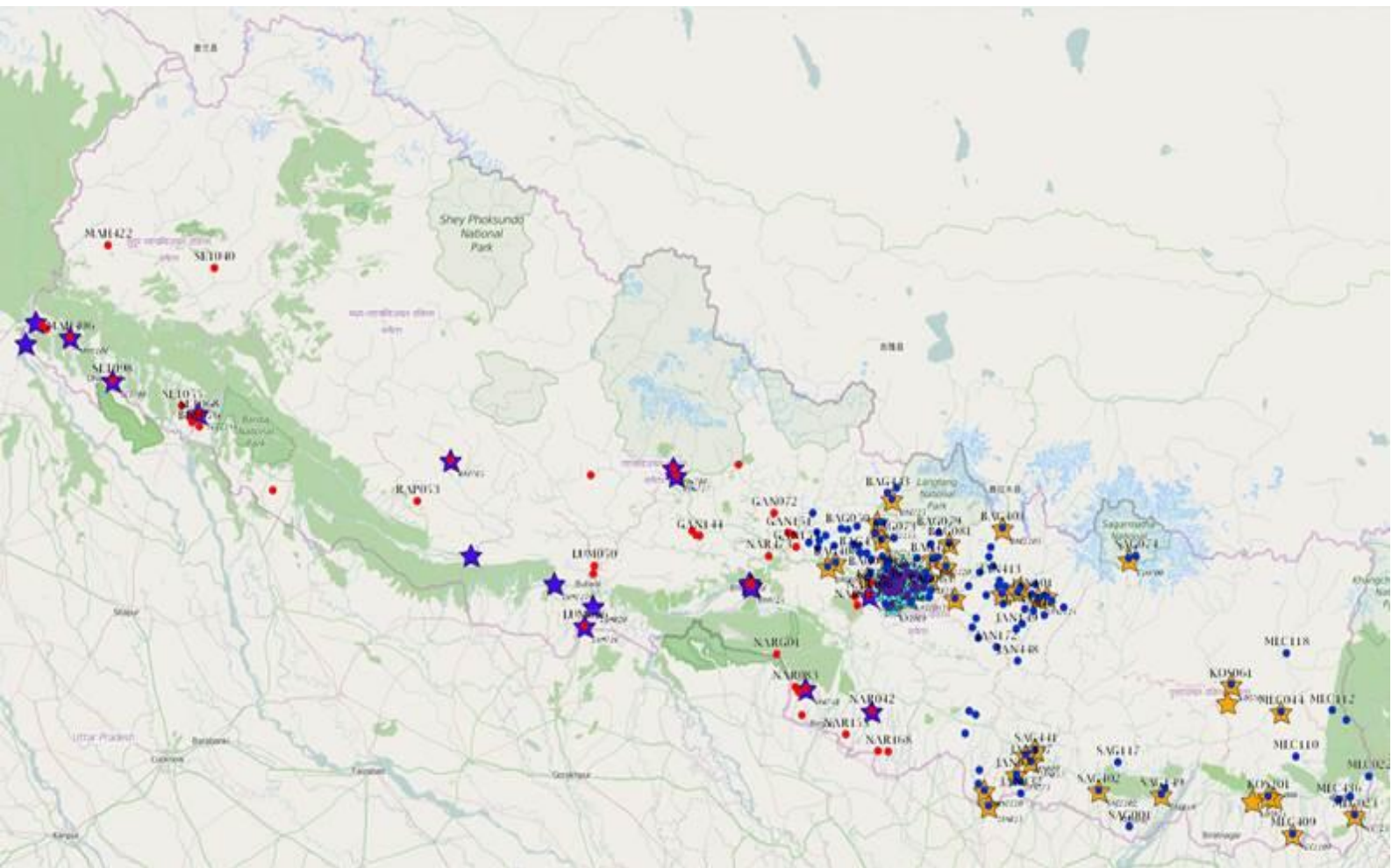
Mobile Network Status Update- Ncell as of 01/05/15

Highlights:

- 252 sites down overall network.
- 185 in central region where the most affected population is located
- 140 2G sites are down in the mostly affected areas (Bhaktapur, Dhading, Gorkha, Kabhrepalanchok, Kathmandu, Lalitpur, Lamjung, Nuwakot, Ramechhap, Rasuwa, Sindhupalchok)
- No additional sites down on 30/04/15 in West, Mid-West and Far-West regions
- Ncell teams are working with vendor teams on recovery focusing on the highly affected areas
- All hospital coverage has been restored (most of this was achieved in the first two days)
- Mobile site (COW) is being moved today and will be set up at where critical coverage is required- this will be expanded over the coming days

Other information:

- Since the earthquake struck, Ncell has been supporting all rescue teams with SIMS and data connectivity
- They are supporting new reporters with SIMS
- Many news agencies and reporters are broadcasting over the Ncell 3G network
- Ncell team is sending representatives to the ETC meetings daily



Other News:

015-04-30: TeliSonera & Ncell are collaborating with Flowminder.org aiming to support the relief efforts by analysing data to try and assess how many people have been affected, and/or displaced by the earthquake. Any analyses will be provided for free to aid agencies through established UN and humanitarian channels as they become available.