

Tonga

Global ETC Teleconference #11

Date: 04/05/2022 Time: 06:00 UTC

All information related to ETC operations can be found on the website:

<https://www.etcluster.org/emergency/tonga-volcanic-eruptionsunami>

For more information or to be added or deleted from the mailing list please contact:

Pacific.ETC@wfp.org

Attendance

Chair	Caroline Teyssier	UAE
Government of Luxembourg	Roland Nurenberg	Luxembourg
ICRC	Dennis Burcer	Philippines
ITU	Paul Hamilton	Geneva
	Vanessa Gray	Geneva
Northwest BPO	Joshua Kimbrow	Philippines
WFP	John Dovale	Fiji
	Kehinde Adewara	UAE
	Maria Gonzalez Garcia	Italy
	Oscar Caleman	Thailand

Agenda

1. Global ETC update
2. Partner updates

Minutes

1. Global ETC update

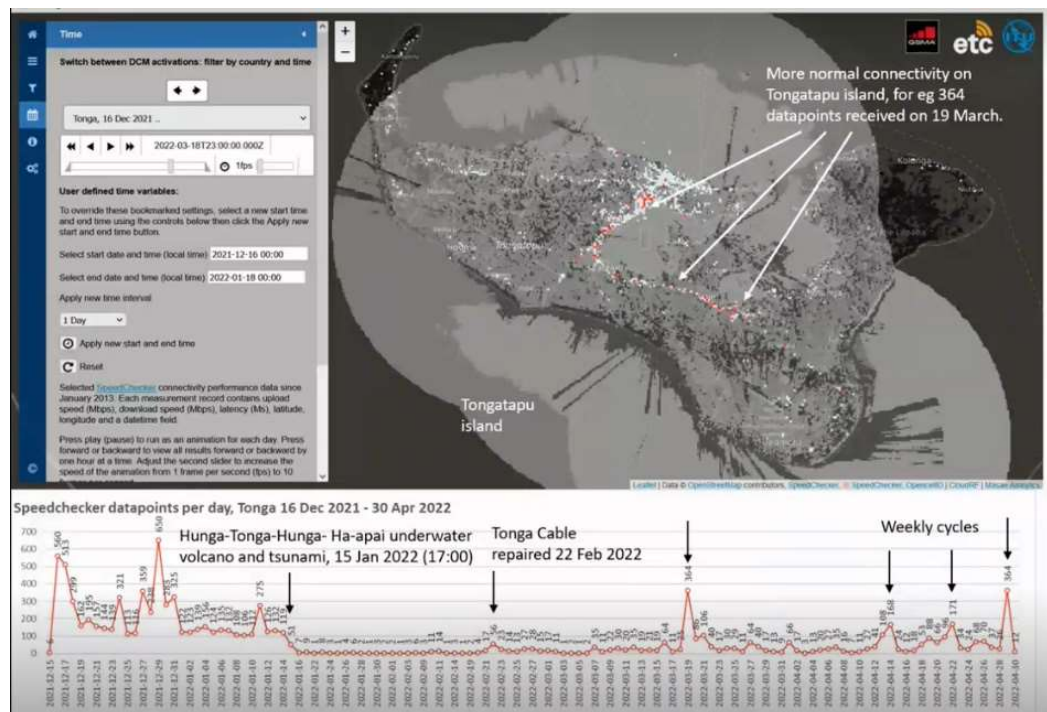
- The Pacific ETC in the Pacific is providing High Frequency (HF), Very High Frequency (VHF), Unmanned Aircraft System (UAS), and ICT solutions as part of the response/recovery and capacity strengthening of the Ministry of Meteorology, Energy, Information, Disaster Management, Environment, Climate Change and Communications (MEIDECC) and National Emergency Management Office (NEMO) in support of the emergency telecommunications response in Tonga.

- The Pacific ETC will donate the communications equipment deployed to Tonga in the first wave of the response (Iridium satellite phones and BGANs) as standby satellite communications & connectivity solutions as part of preparedness for future disasters. The ETC in the Pacific will provide guidance and support to Tonga's MEIDECC and NEMO to ensure those equipment are prepositioned correctly.
- The ETC is working to augment the existing Very Small Aperture Terminals (VSAT) solution provided by the Government of Luxembourg's emergency.lu with alternative VSAT service capacity as a backup contingency to deploy connectivity on the outer islands of Tonga. The budget is being adjusted to accommodate this plan while the delivery of the replacement emergency.lu modems are being awaited.
- The ETC in the Pacific is facilitating travel protocols and documentation for the deployment of one Standby Partner (SBP) with the relevant authorities including the Ministry of Health and MEIDECC. The position is a telecommunications specialist to support the coordination and installation of proposed ETC HF, VHF, ICT, and VSAT connectivity equipment for Tonga.

2. Partner updates

International Telecommunication Union (ITU)

- **Disaster Connectivity Mapping (DCM):** ITU continues to share insights on the status of connectivity on the main island of Tongatapu by mapping the data points detected. Following the repair of the undersea fibre international communications cable on 9 February, Tongatapu has experienced a gradual return to normal connectivity levels. However, the availability of national data connectivity services will not return to the levels seen before the volcanic eruption until the second section of undersea fibre domestic cable is repaired.



3. AOB

- N/a

The next teleconference meeting will be held on 18 May 2022.

Acronyms

BGAN	Broadband Global Area Network
DCM	Disaster Connectivity Mapping
ETC	Emergency Telecommunications Cluster
HF	High Frequency
ICT	Information and Communication Technology
IMO	Information Management Officer
ITU	International Telecommunication Union
MEIDECC	Ministry of Meteorology, Energy, Information, Disaster Management, Environment, Climate Change, and Communications
NEMO	National Emergency Management Office
UAS	Unmanned Aircraft System
VHF	Very High Frequency
VSAT	Very Small Aperture Terminal
WFP	World Food Programme
SBPs	Standby Partners

Minutes: Kehinde Adewara, Global ETC Information Management & Communications Officer