

Philippines, Typhoon Rai / Odette

Global ETC Teleconference #2

Date: 27/12/2021 Time: 13:00 UTC

All information related to ETC operations can be found on the website: www.etcluster.org

For more informations or to be added or deleted from the mailing list please contact:

Philippines.ETC@wfp.org

Attendance

Chair	Prakash Muniandy	UAE
Cisco Crisis Response	Matt Runyan	USA
	Joseph Harrison	USA
Ericsson Response	Mike Duffin	Canada
Government of Luxembourg	Gilles Hoffmann	Luxembourg
ICRC	Dennis Burcer	Philippines
ITU	Paul Hamilton	Geneva
MSB	John Isaksson	Sweden
NetHope	Stephanie Siy	USA
	Ingolfur Haraldsson	Iceland
	Dagbjartur Brynjarsson	Iceland
Plan International	Geron Geniston	Philippines
Save the Children	Cristian Alfaro	Guatemala
UNICEF	Marta Dabbas Castello	Spain
US Department of State	Joseph Burton	USA
WFP	Elizabeth Millership	UAE
	Martin Kristensson	Sweden
	Omar Namaoui	Algeria

Agenda

1. Situation update
2. Global ETC update
3. Partner updates

Minutes

1. Situation update

- Connectivity and power services continue to be impacted across all areas devastated by the typhoon. Initial reports indicate that affected populations are without communication and this may take up to six months to fully restore. There is a critical need to provide communications networks in key operational areas to support the humanitarian response. Currently, humanitarian organizations report challenges in accessing means of communication.
- Connectivity services are being provided to support government and coordination hubs in six*¹ key operational areas impacted by Typhoon Rai/Odette – 1) Surigao City in Northern Mindanao, 2) Siargao Island, 3) Dinagat Island, 4) Sibalay City in the Western Visayas, 5) Alegria, Cebu and 6) Butuan City in Mindanao. Connectivity is being facilitated by government VSATs and Mobile Operations Vehicle for Emergencies (MOVE) solutions deployed by the government's Department of Information and Communications Technology (DICT).
- There are reports that the airport in Surigao City has reopened, primarily for military flights with cargo.

2. Global ETC update

Structure and funding

- The ETC has been mobilized in the Philippines under a 'sector' rather than 'cluster' approach due to the response being government-led, and will therefore be referred to as the 'ETS'. The operational approach to funding, services, and deployment will remain the same.
- Discussions on Central Emergency Relief Fund (CERF) allocations were held on 27 December – the ETS was one of the selected priority sectors and will submit its project proposal of US\$300,000 to CERF on 28 December.
- The ETS will work with partners and government to provide and/or enhance connectivity services in the six common operational areas identified above through coordination, logistics and on-the-ground support.

Travel

- UN agencies have submitted a visa waiver request to the Government of the Philippines to reduce travel restrictions for staff deploying to support the response. Currently, all staff of any nationality require a pre-approved visa to enter the country, which can take more than a month to receive. Update: The Cabinet Secretariat has since requested UN agencies to submit the list of staff who require a visa on arrival.

Equipment

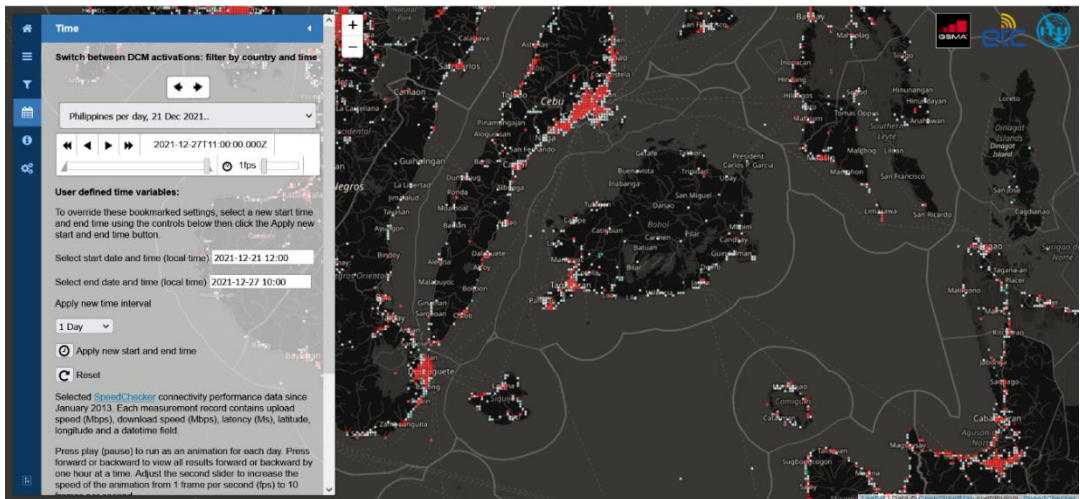
- Three VSATs stored by the Government of Luxembourg in the UN warehouse in Dubai, UAE, are confirmed as ready for deployment, pending approvals.

¹ *Locations have been revised since the meeting – this list of six locations reflects the latest updates.

3. Partner updates

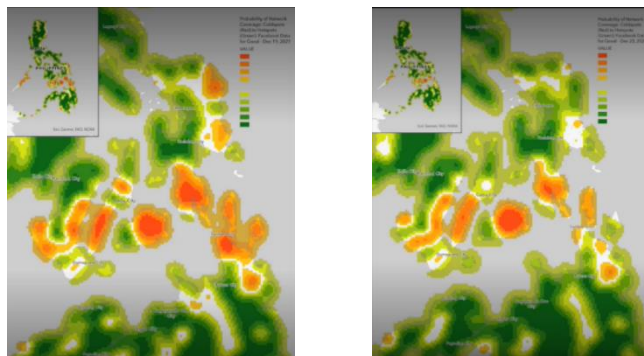
ITU

- ITU continues to gather data for the [Disaster Connectivity Map \(DCM\)](#) on an hourly basis. According to the data captured over the past week, there has been a continued lack of connectivity across Bohol and other islands, including parts of Cebu.
- From 28 December, ITU is planning to scale down the current measurement campaign from a 250 kilometre radius from Cebu City to a more focused radius across the worst affected areas, mainly concentrated in the South Visayas and northern Mindanao.
- An overview of the status of connectivity across the affected region is useful, with Cebu at the centre.



NetHope

- NetHope held a second call with its members on the response to Typhoon Rai/Odette on 27 December. Members on the ground report that some connectivity provided by national providers is being restored, but that where this has taken place, congestion of the service renders it unusable.
- NetHope shared its collated Facebook Data for Good map, demonstrating a slight improvement in the status of connectivity across the worst affected areas (reduced red/orange, increased green coverage) from 19 December (left) compared with 22 December (right). Some data shown may not be entirely accurate, as connectivity is being provided as part of the emergency response.



- NetHope has received several requests for connectivity services from Cebu, Bohol and Leyte Islands. More requests are anticipated as NetHope member organizations finalize their assessments.
- NetHope is also liaising with a number of organizations from the tech industry in the Philippines – these organizations have offered their support with resources and personnel.
- NetHope offered to support coordination with the wider I/NGO response community in the Philippines via its members as part of the response.
- The Global ETC and NetHope will coordinate bilaterally to potentially ship NetHope communications equipment from Dubai, if required.

Cisco Crisis Response

- Cisco has sufficient communications equipment in the Philippines that can support connectivity in approximately five sites. This can be loaned by Cisco as part of the response, as well as any further Cisco equipment imported into the country.
- There is a need to hold a bilateral call to gather information on all available partner equipment, to identify what is needed.

The next teleconference meeting will be held on 5 January 2022 at 13:00 UTC

13:00 UTC
14:00 Rome
17:00 Dubai
20:00 Bangkok
21:00 Manila

Acronyms

DICT	Department of Information and Communications Technology
MOVE	Mobile Operations Vehicle for Emergencies
VSAT	Very Small Aperture Terminal
INGO	International Non Governmental Organization
UAE	United Arab Emirates
ITU	International Telecommunication Union
CERF	Central Emergency Relief Fund

Minutes: Elizabeth Millership, Global ETC Operational Information Management Officer